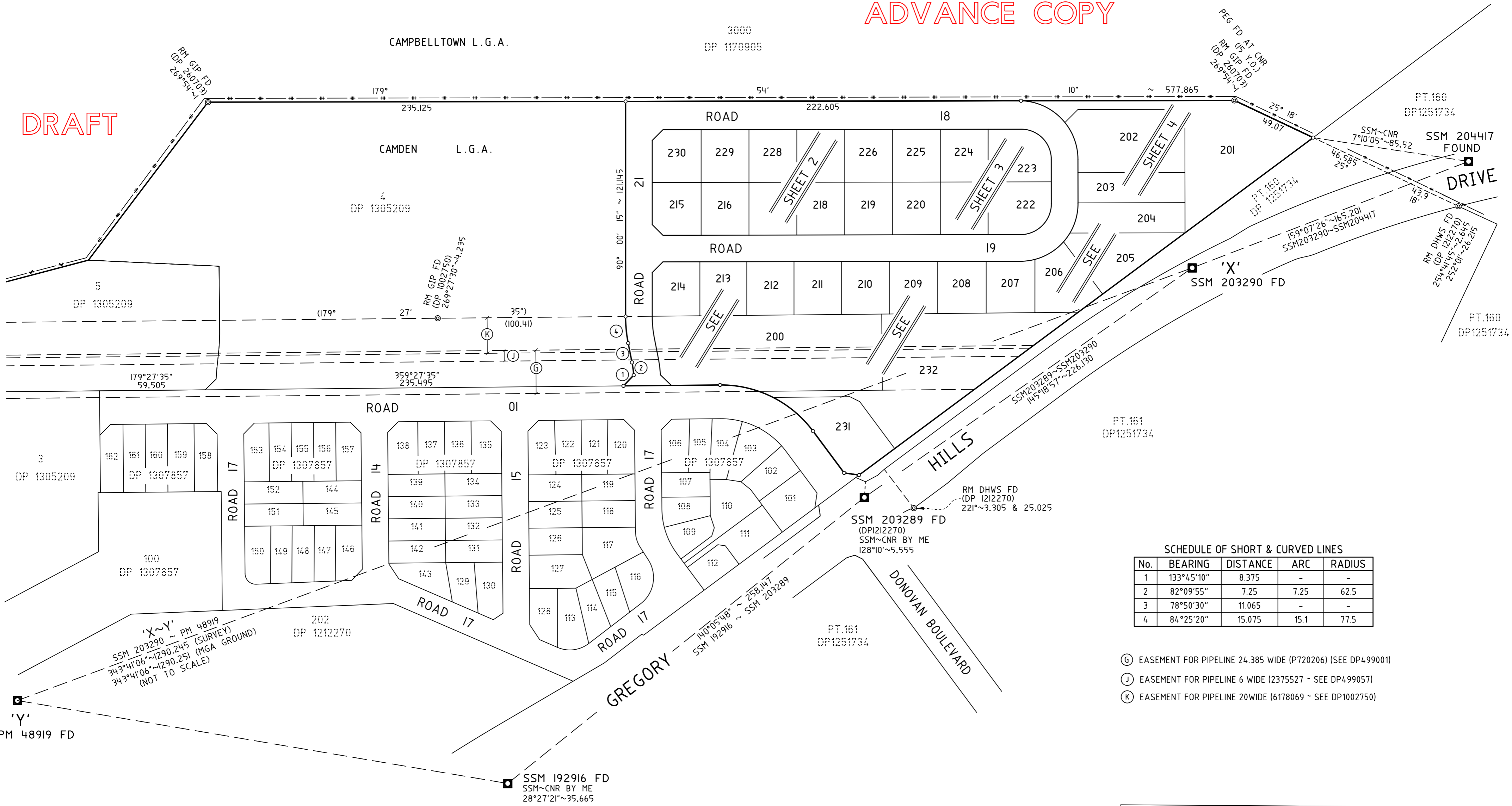


M.G.A.
(SCIMS)

ADVANCE COPY

DRAFT



SCHEDULE OF SHORT & CURVED LINES

No.	BEARING	DISTANCE	ARC	RADIUS
1	133°45'10"	8.375	-	-
2	82°09'55"	7.25	7.25	62.5
3	78°50'30"	11.065	-	-
4	84°25'20"	15.075	15.1	77.5

- Ⓒ EASEMENT FOR PIPELINE 24.385 WIDE (P720206) (SEE DP499001)
- Ⓙ EASEMENT FOR PIPELINE 6 WIDE (2375527 ~ SEE DP499057)
- Ⓚ EASEMENT FOR PIPELINE 20WIDE (6178069 ~ SEE DP1002750)

CAUTION
THIS PLAN WAS PREPARED AS A DRAFT PLAN OF SUBDIVISION ONLY. THE INFORMATION SHOWN ON THE PLAN IS NOT SUITABLE FOR ANY OTHER PURPOSE. THE DIMENSIONS, AREAS, NUMBER OF LOTS, SIZE AND LOCATION OF EASEMENTS, AND RESTRICTIONS AS SHOWN ON THIS PLAN ARE APPROXIMATE ONLY AND MAY VARY WHEN MORE DETAILED INFORMATION IS AVAILABLE. CAUTION SHOULD BE EXERCISED IF ANY RELIANCE IS PLACED ON THE INFORMATION ON THIS PLAN FOR ANY FINANCIAL DEALINGS INVOLVING THE LAND. THIS NOTE IS AN INTEGRAL PART OF THIS PLAN.

SURVEYING & SPATIAL INFORMATION REGULATION 2017 CLAUSE 70

MARK	M.G.A. CO-ORDINATES		CLASS	P.U.	METHOD	STATE
	EASTING	NORTHING				
PM 48919	295 601.785	6 233 209.759	B	0.02	FROM SCIMS	FOUND
SSM 192916	295 669.915	6 232 355.326	D	N/A	FROM SCIMS	FOUND
SSM 203289	295 835.568	6 232 157.275	D	N/A	FROM SCIMS	FOUND
SSM 203290	295 964.271	6 231 971.354	B	0.02	FROM SCIMS	FOUND
SSM 204417	296 023.137	6 231 816.978	D	N/A	FROM SCIMS	FOUND

SOURCE: M.G.A. CO-ORDINATES ADOPTED FROM S.C.I.M.S AT 28/03/2024
COMBINED SCALE FACTOR 1.000088 ~ MGA DATUM: GDA2020 ~ ZONE: 56

Surveyor: GARY MARK WARREN
Date of Survey:
Surveyor's Ref: 30013567.L02
STAGE 2.Draft.v04-2025.03.27

PLAN OF SUBDIVISION OF LOT 2 DP1305209
ADVANCE COPY

LGA: CAMDEN
Locality: GLEDSWOOD HILLS
Subdivision No:
Lengths are in metres. Reduction Ratio 1:1500

Registered

DP DRAFT

- (G) EASEMENT FOR PIPELINE 24.385 WIDE (P720206) (SEE DP499001)
- (J) EASEMENT FOR PIPELINE 6 WIDE (2375527 ~ SEE DP499057)
- (K) EASEMENT FOR PIPELINE 20 WIDE (6178069 ~ SEE DP1002750)
- (A) EASEMENT TO DRAIN WATER 2 WIDE
- (R) RESTRICTION ON THE USE OF LAND (0.9 WIDE) (RETAINING WALL)
- (V) POSITIVE COVENANT (0.9 WIDE) (RETAINING WALL)

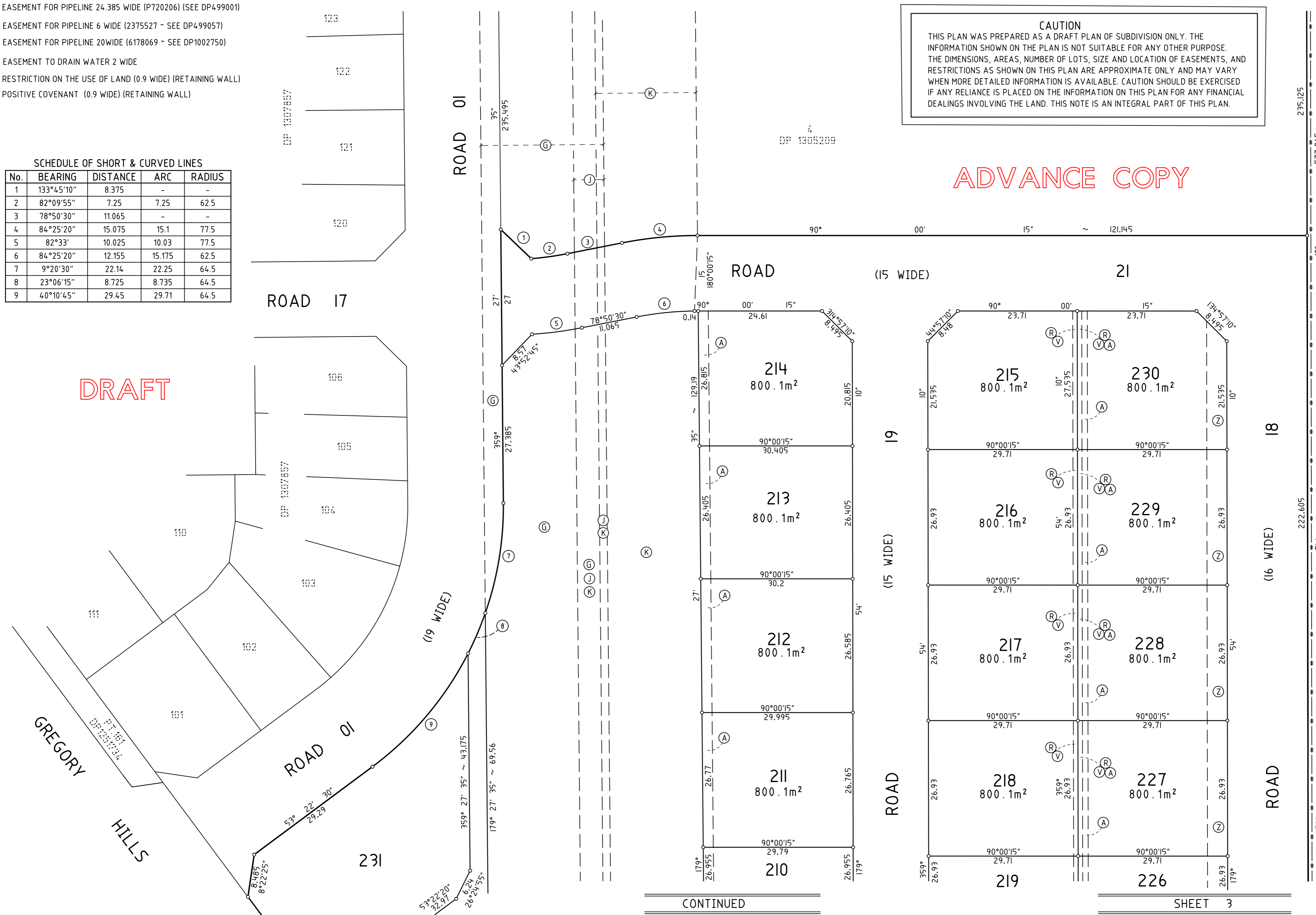
SCHEDULE OF SHORT & CURVED LINES

No.	BEARING	DISTANCE	ARC	RADIUS
1	133°45'10"	8.375	-	-
2	82°09'55"	7.25	7.25	62.5
3	78°50'30"	11.065	-	-
4	84°25'20"	15.075	15.1	77.5
5	82°33'	10.025	10.03	77.5
6	84°25'20"	12.155	15.175	62.5
7	9°20'30"	22.14	22.25	64.5
8	23°06'15"	8.725	8.735	64.5
9	40°10'45"	29.45	29.71	64.5

CAUTION
 THIS PLAN WAS PREPARED AS A DRAFT PLAN OF SUBDIVISION ONLY. THE INFORMATION SHOWN ON THE PLAN IS NOT SUITABLE FOR ANY OTHER PURPOSE. THE DIMENSIONS, AREAS, NUMBER OF LOTS, SIZE AND LOCATION OF EASEMENTS, AND RESTRICTIONS AS SHOWN ON THIS PLAN ARE APPROXIMATE ONLY AND MAY VARY WHEN MORE DETAILED INFORMATION IS AVAILABLE. CAUTION SHOULD BE EXERCISED IF ANY RELIANCE IS PLACED ON THE INFORMATION ON THIS PLAN FOR ANY FINANCIAL DEALINGS INVOLVING THE LAND. THIS NOTE IS AN INTEGRAL PART OF THIS PLAN.

ADVANCE COPY

DRAFT



M.G.A. (SCIMS)

CAMPBELLTOWN L.G.A.
 3000
 DP 1178805

Surveyor: GARY MARK WARREN
 Date of Survey:
 Surveyor's Ref: 30013567.L02
 STAGE 2.Draft.v04-2025.03.27

PLAN OF SUBDIVISION OF LOT 2 DP1305209

ADVANCE COPY

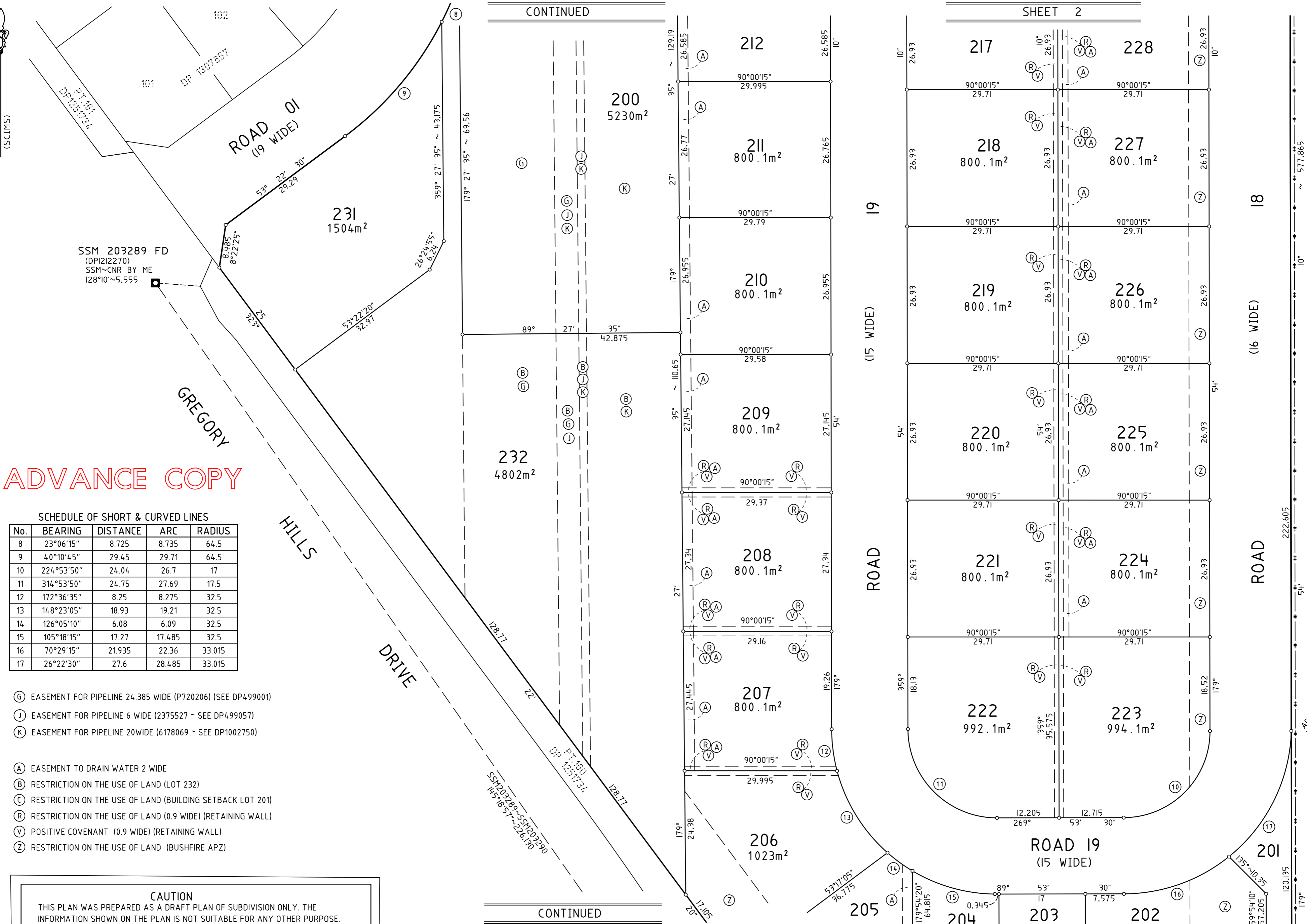
LGA: CAMDEN
 Locality: GLEDSWOOD HILLS
 Subdivision No:
 Lengths are in metres. Reduction Ratio 1:500

Registered

DP DRAFT



DRAFT



ADVANCE COPY

SCHEDULE OF SHORT & CURVED LINES

No.	BEARING	DISTANCE	ARC	RADIUS
8	23°06'15"	8.725	8.735	64.5
9	40°10'45"	29.45	29.71	64.5
10	224°53'50"	24.04	26.7	17
11	314°53'50"	24.75	27.69	17.5
12	172°36'35"	8.25	8.275	32.5
13	148°23'05"	18.93	19.21	32.5
14	126°05'10"	6.08	6.09	32.5
15	105°18'15"	17.27	17.485	32.5
16	70°29'15"	21.935	22.36	33.015
17	26°22'30"	27.6	28.485	33.015

- (G) EASEMENT FOR PIPELINE 24.385 WIDE (P720206) (SEE DP499001)
- (J) EASEMENT FOR PIPELINE 6 WIDE (2375527 ~ SEE DP499057)
- (K) EASEMENT FOR PIPELINE 20WIDE (6178069 ~ SEE DP1002750)
- (A) EASEMENT TO DRAIN WATER 2 WIDE
- (B) RESTRICTION ON THE USE OF LAND (LOT 232)
- (C) RESTRICTION ON THE USE OF LAND (BUILDING SETBACK LOT 201)
- (R) RESTRICTION ON THE USE OF LAND (0.9 WIDE) (RETAINING WALL)
- (V) POSITIVE COVENANT (0.9 WIDE) (RETAINING WALL)
- (Z) RESTRICTION ON THE USE OF LAND (BUSHFIRE APZ)

CAUTION
 THIS PLAN WAS PREPARED AS A DRAFT PLAN OF SUBDIVISION ONLY. THE INFORMATION SHOWN ON THE PLAN IS NOT SUITABLE FOR ANY OTHER PURPOSE. THE DIMENSIONS, AREAS, NUMBER OF LOTS, SIZE AND LOCATION OF EASEMENTS, AND RESTRICTIONS AS SHOWN ON THIS PLAN ARE APPROXIMATE ONLY AND MAY VARY WHEN MORE DETAILED INFORMATION IS AVAILABLE. CAUTION SHOULD BE EXERCISED IF ANY RELIANCE IS PLACED ON THE INFORMATION ON THIS PLAN FOR ANY FINANCIAL DEALINGS INVOLVING THE LAND. THIS NOTE IS AN INTEGRAL PART OF THIS PLAN.

Surveyor: GARY MARK WARREN
 Date of Survey:
 Surveyor's Ref: 30013567.L02
 STAGE 2.Draft.v03-2025.03.27

PLAN OF SUBDIVISION OF LOT 2 DP1305209
ADVANCE COPY

LGA: CAMDEN
 Locality: GLEDSWOOD HILLS
 Subdivision No:
 Lengths are in metres. Reduction Ratio 1:500

Registered

DP DRAFT

CAMPBELLTOWN L.G.A.

3000
DP 11703005

SHEET 4

M.G.A.
(SCIMS)

ADVANCE COPY

DRAFT

SCHEDULE OF SHORT & CURVED LINES

No.	BEARING	DISTANCE	ARC	RADIUS
10	224°53'50"	24.04	26.7	17
11	314°53'50"	24.75	27.69	17.5
12	172°36'35"	8.25	8.275	32.5
13	148°23'05"	18.93	19.21	32.5
14	126°05'10"	6.08	6.09	32.5
15	105°18'15"	17.27	17.485	32.5
16	70°29'15"	21.935	22.36	33.015
17	26°22'30"	27.6	28.485	33.015

- (G) EASEMENT FOR PIPELINE 24.385 WIDE (P720206) (SEE DP499001)
- (J) EASEMENT FOR PIPELINE 6 WIDE (2375527 ~ SEE DP499057)
- (K) EASEMENT FOR PIPELINE 20WIDE (6178069 ~ SEE DP1002750)

- (A) EASEMENT TO DRAIN WATER 2 WIDE
- (B) RESTRICTION ON THE USE OF LAND (LOT 232)
- (C) RESTRICTION ON THE USE OF LAND (BUILDING SETBACK LOT 201)
- (R) RESTRICTION ON THE USE OF LAND (0.9 WIDE) (RETAINING WALL)
- (V) POSITIVE COVENANT (0.9 WIDE) (RETAINING WALL)
- (Z) RESTRICTION ON THE USE OF LAND (BUSHFIRE APZ)

CAUTION

THIS PLAN WAS PREPARED AS A DRAFT PLAN OF SUBDIVISION ONLY. THE INFORMATION SHOWN ON THE PLAN IS NOT SUITABLE FOR ANY OTHER PURPOSE. THE DIMENSIONS, AREAS, NUMBER OF LOTS, SIZE AND LOCATION OF EASEMENTS, AND RESTRICTIONS AS SHOWN ON THIS PLAN ARE APPROXIMATE ONLY AND MAY VARY WHEN MORE DETAILED INFORMATION IS AVAILABLE. CAUTION SHOULD BE EXERCISED IF ANY RELIANCE IS PLACED ON THE INFORMATION ON THIS PLAN FOR ANY FINANCIAL DEALINGS INVOLVING THE LAND. THIS NOTE IS AN INTEGRAL PART OF THIS PLAN.

Surveyor: GARY MARK WARREN
 Date of Survey:
 Surveyor's Ref: 30013567.L02
 STAGE 2.Draft.v04-2025.03.27

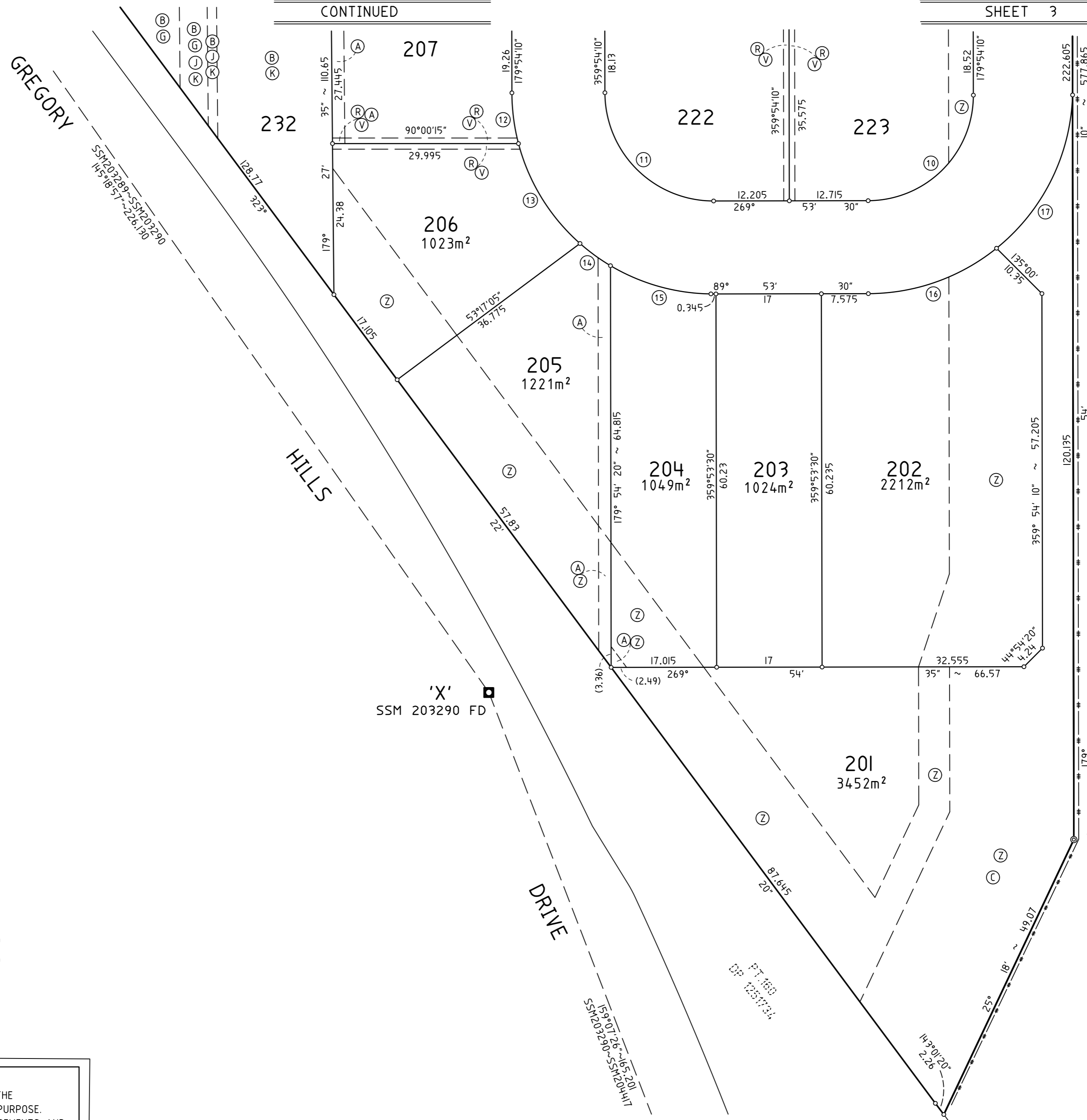
PLAN OF SUBDIVISION OF LOT 2 DP1305209

ADVANCE COPY

LGA: CAMDEN
 Locality: GLEDSWOOD HILLS
 Subdivision No:
 Lengths are in metres. Reduction Ratio 1:500

Registered

DP DRAFT



PEG FD AT CNR
 (15 X.O.)
 FM GIP FD
 DP 260703
 269°54' ~

CAMPBELLTOWN L.G.A.

3000
 DP 1170905