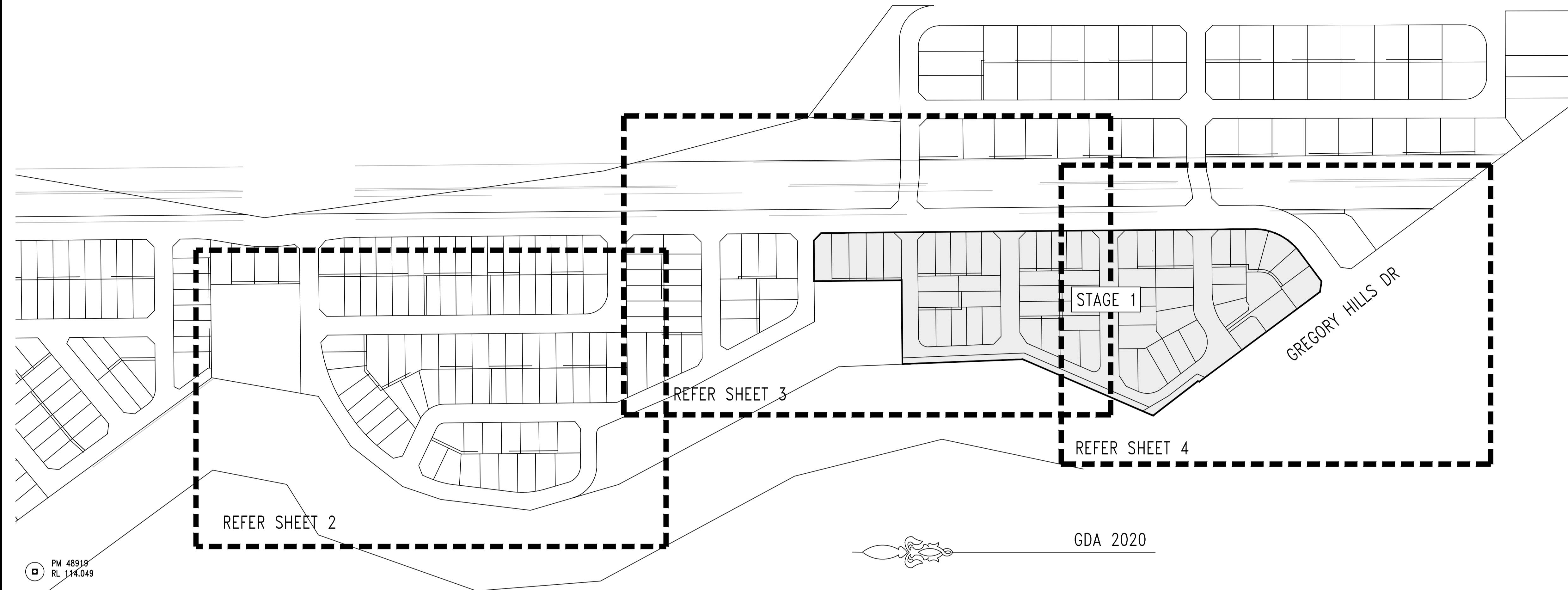
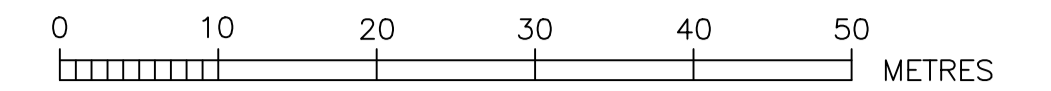


# DEVELOPER CONTRACT PLAN STAGE 1



## LOCALITY & BENCHMARK PLAN

NOT TO SCALE

- NOTES :-
- DESIGNER & WATER SERVICE COORDINATOR:  
RMA INFRASTRUCTURE PTY LTD  
PO BOX 273 PENRITH NSW 2751  
PH. 47222774. REFERENCE No. W-12404
  - FOR:  
LEGACY PROPERTY SERVICES PTY LTD  
LEVEL 45, 25 MARTIN PLACE,  
SYDNEY NSW 2000  
02 9252 1111
  - THE WORKS AND MATERIAL WERE CONSTRUCTED IN ACCORDANCE WITH THE SEWER RETICULATION CODE OF AUSTRALIA (WSA 02-2002-2.2 VERSION 4) AND SYDNEY WATER TECHNICAL SPECIFICATION (CIVIL) Ver.11.
  - ALL LOTS WERE VACANT AT TIME OF SURVEY.
  - ALL STRUCTURES WERE CONSTRUCTED TO FINISHED SURFACE LEVELS. ALL LEVELS QUOTED ON THIS PLAN REFER TO PROPOSED FINISHED SURFACE LEVELS. IT WAS THE CONTRACTORS RESPONSIBILITY TO LIAISE WITH THE CIVIL CONTRACTOR TO VERIFY THE PROPOSED SURFACE LEVELS QUOTED ON THIS PLAN ARE CORRECT PRIOR TO INSTALLING SEWER STRUCTURES. IF ANY DISCREPANCIES WERE FOUND, THE WATER SERVICING COORDINATOR WAS NOTIFIED IMMEDIATELY.
  - PIPES CONCRETE ENCASED SHOWN ACCORDINGLY:  
EACH SECTION OF PIPE WAS CONCRETE ENCASED IN THE FOLLOWING MANNER :
  - AREAS HATCHED THUS NOT DRAINED:
  - CURRENT SERVICES SEARCH & SITE CHECK OF ALL EXISTING SERVICES WAS NECESSARY PRIOR TO THE COMMENCEMENT OF WORK & APPROPRIATE PROCEDURES, PRECAUTIONS AND CARE WAS TAKEN BY THE CONSTRUCTOR WHEN WORKING IN CLOSE PROXIMITY TO SERVICES. THE CONSTRUCTOR VERIFIED THE EXACT LOCATION OF ALL EXISTING SERVICES DURING CONSTRUCTION AND ANY DAMAGE TO EXISTING SERVICES WAS RECTIFIED AT THE CONSTRUCTORS EXPENSE.
  - FIELD COMPACTION TESTS CONDUCTED TO SATISFY THE SEWAGE CODE OF AUSTRALIA SYDNEY WATER EDITION 1 - VERSION 4 (WSA 02-2002-2.2 VERSION 4) & SYDNEY WATER TECHNICAL SPECIFICATION CIVIL v 11. IT WAS THE LISTED FIELD TESTERS RESPONSIBILITY TO ENSURE THE CORRECT NUMBER OF TESTS WERE CARRIED OUT TO SATISFY THE STANDARDS AND SPECIFICATIONS AS PER INSTRUCTIONS TO FIELD TESTERS CLAUSE 3.  
- 291 COMPACTION TESTS COMPLETED.
  - JUNCTION AND CONCRETE ENCASEMENT LOCATIONS SHOWN AS APPROXIMATE ONLY. IT WAS THE CONSTRUCTORS RESPONSIBILITY TO LIAISE WITH CIVIL CONTRACTOR TO CONFIRM EXACT LOCATIONS REQUIRED. THE CONSTRUCTOR WAS RESPONSIBLE TO KEEP AN ACCURATE RECORD OF JUNCTION AND CONCRETE ENCASEMENT CHAINAGES DURING CONSTRUCTION. CHAINAGES WERE PROVIDED TO THE DESIGNER AT THE COMPLETION OF CONSTRUCTION.
  - PROPERTY CONNECTIONS (PCS) INSTALLED IN ACCORDANCE WITH SEWERAGE CODE OF AUSTRALIA WSA 02-2002-2.2  
- PCS ARE DN100 UNLESS NOTED OTHERWISE.  
- PCS CONFIGURATION BASED ON RETICULATION DEPTH PROPERTY SIZE & TOPOGRAPHY  
- DENOTES STANDARD PCS CONNECTION - SEW-1151-S 12.
  - ALL MAINTENANCE CHAMBERS REHAU/PLEX OR EQUIVALENT TYPE MANUFACTURED WITH PRE DESIGNED ANGLE WITH MINIMUM 600MM RISER.
  - MAINTENANCE HOLES CONSTRUCTED IN ACCORDANCE WITH SYDNEY WATER DEEMED TO COMPLY DRAWINGS DTC 2000, DTC 2202, DTC 2203, DTC 2220, DTC 2221, DTC 2222 AND AS SPECIFIED IN WSA 02-2002-2.2
  - THE CONTRACTOR CONFIRMED THE LOCATION AND INVERT LEVELS OF THE EXISTING SEWER AT CHAINAGE 0.00 OF LINE 1 PRIOR TO COMMENCEMENT OF WORKS. THE DESIGNER WAS NOTIFIED IMMEDIATELY OF ANY DISCREPANCIES BETWEEN WHAT WAS LOCATED ON SITE AND WHAT WAS QUOTED ON THIS PLAN.

### ENVIRONMENTAL REQUIREMENTS.

- THE REVIEW OF ENVIRONMENTAL FACTORS IS AN INTEGRAL PART OF THIS DESIGN. ALL EROSION AND SEDIMENTATION CONTROL COMPLIED TO THE STANDARDS OF THE SOIL CONSERVATION SERVICE OF N.S.W
- ALL OPEN STORM WATER GRATES & STORM WATER CHANNELS DOWNSTREAM OF CONSTRUCTION ACTIVITY TO BE ADEQUATELY PROTECTED BY STRAW BALES OR GEOTEXTILE FENCE.
- SILT STOP DEVICES INSTALLED PRIOR TO ANY CONSTRUCTION ACTIVITY, EFFECTIVELY MAINTAINED AND TO BE REMOVED ONLY AFTER THE AREA HAS BEEN SATISFACTORILY RE-VEGETATED.
- SILTATION CONTROL TO BE CARRIED OUT TO THE SATISFACTION OF THE SITE SUPERINTENDENT.
- ALL STOCKPILES OF EXCAVATED MATERIAL TO BE SURROUNDED BY STRAW BALES AND/OR GEOTEXTILE FENCE TO THE SATISFACTION OF THE SUPERINTENDENT.
- SITE RESTORATION TO BE CARRIED OUT TO THE SATISFACTION OF THE SUPERINTENDENT.
- NO TREES OR VEGETATION TO BE REMOVED WITHOUT PRIOR APPROVAL FROM THE SUPERINTENDENT AND OR LOCAL GOVERNMENT AUTHORITY.

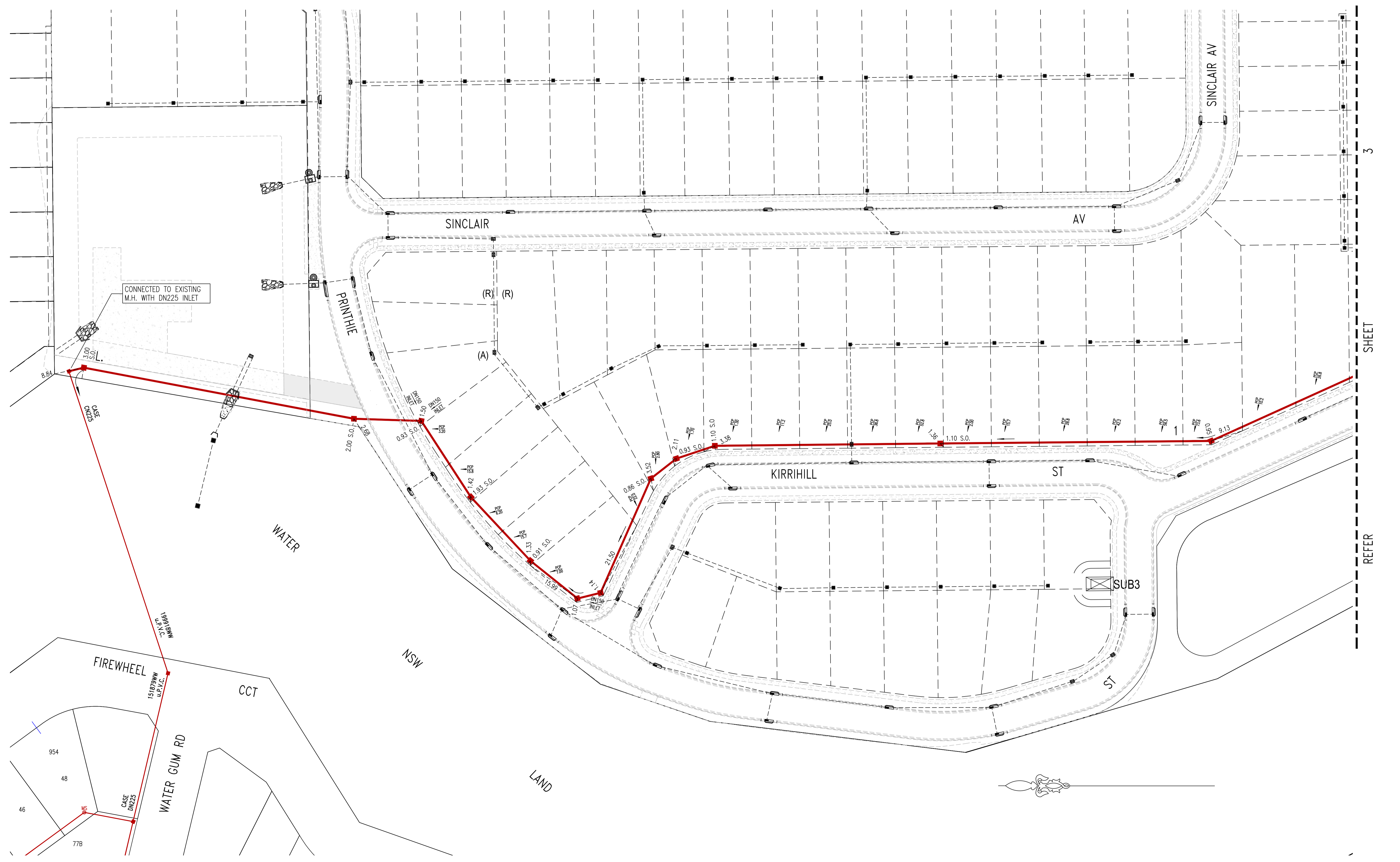
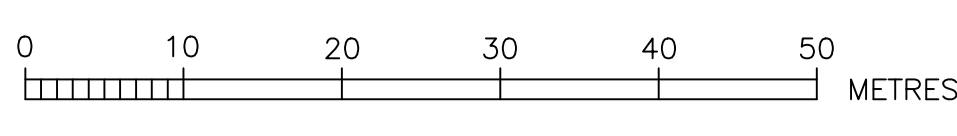
DTC DRAWING SCHEDULE		
DRAWING	REVISION	DATE
2000	D	31/07/2024
2200	G	31/07/2024
2202	F	31/07/2024
2203	C	31/07/2024
2220	E	31/07/2024
2221	D	31/07/2024
2222	D	31/07/2024
2223	C	31/07/2024
2224	A	31/07/2024



No.	AMENDMENT DESCRIPTION	BY	DATE
I	WORK-AS-CONSTRUCTED	CH	12.12.25
H	STRUCTURE REMOVED L.1 CH 1103.88	LD	18.07.25
G	BORE ADDED L.1 Ch 1074 - 1129	LD	26.03.25
F	AMENDMENTS TO SUIT UPDATED CIVLS	SP	03.02.25
E	AMENDMENTS TO L.1 TO SUIT SUBSTATION	SP	20.06.24
D	FOR SWC APPROVAL	SP	25.05.24
C	AMENDMENTS FOR SUBMISSION TO SYDNEY WATER	BK	29.04.24
B	AMENDMENTS TO L.6 & 8	SP	15.3.24
A	FIRST ISSUE - TENDER	SP	23.02.24

PLAN TO BE READ IN CONJUNCTION WITH CURRENT SYDNEY WATER STANDARDS SYDNEY WATER CORPORATION  PRIOR TO COMMENCEMENT OF EXCAVATION FOR PROPOSED AND EXISTING SERVICES CONTACT :- DIAL BEFORE YOU DIG Ph. 1100 ELECTRICITY Ph. GAS Ph. TELECOMMUNICATIONS Ph. GIVING AT LEAST 48 HOURS NOTICE.	UTILITIES TYPE DATE REF. TYPE DATE REF. PROP. STORMWATER: SWD --- SWD 25.01.25 CIVLS	WORK AS CONSTRUCTED CERTIFICATION DEVELOPER GDS PTY LTD WATER SERVICE CO-ORDINATOR RMA INFRASTRUCTURE PTY LTD CONSTRUCTOR ADAM CHRISTOFIDES PLUMBING COMPLETED 11.07.2025 W.A.C. PREPARED 12.12.2025 DESIGNER RMA INFRASTRUCTURE PTY LTD I CERTIFY THAT THE WORKS HAVE BEEN CONSTRUCTED IN ACCORDANCE WITH THE WORK AS CONSTRUCTED DRAWINGS.	PIPE SCHEDULE SIZE DN TYPE CLASS LENGTH PIPE JOINING METHOD / NOTES 100 U.P.V.C. SN10 43.96 SWJ 150 U.P.V.C. SN8 1471.25 225 U.P.V.C. SN8 446.18 355 STEEL 5PL 55.00 BORE SLEEVE	AUSTRALIAN HEIGHT DATUM  SCALES PLAN 1:500 SECTION { HOR. 1:500 VERT. 1:125 CROSS SECTIONS . . . . . NATURAL LENGTHS, DEPTHS & LEVELS ARE IN METRES.	NO AMENDMENTS ARE TO BE MADE TO THIS PLAN WITHOUT REFERENCE TO SYDNEY WATER. THIS PLAN IS NOT NECESSARILY UP TO DATE OR CORRECT AND SYDNEY WATER ACCEPTS NO RESPONSIBILITY.  U.B. DIRECTORY . . . . . MAP 326 REF: A2 UBD 41st  SHEET . 1 . OF . 8 . File No. N/A	Sydney WATER SYDNEY WATER CORPORATION  Case No. 211074WW  CAMDEN SEWERAGE DRAINS TO WIANAMATTA CARR. & SPS 1156 WEST CAMDEN S.T.P.
	DESIGN HEAD . . . . . m NO BOUNDARY TRAPS REQUIRED.		DESIGNER HEAD . . . . . m			

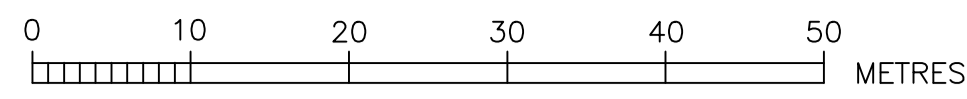
PLAN DRAWN DATE: 12.12.2025 VERSION: 1 SHEET 1 OF 8 SHEETS



SHEET 2 OF 8 SHEETS

PLAN DRAWN DATE: 12.12.2025 VERSION: 1

WORK AS CONSTRUCTED CERTIFICATION		SYDNEY WATER CORPORATION	
DEVELOPER	GDS PTY LTD	<b>Sydney WATER</b>	Case No. 211074WW SHT 2 OF 8 SHTS.
W.S.C.	RMA INFRASTRUCTURE PTY LTD		
CONSTRUCTOR	ADAM CHRISTOFIDES PLUMBING	SYDNEY WATER CORPORATION	
COMPLETED	11.07.2025	FOR DETAILS OF SERVICES SEE SHEET 1	
W.A.C. PREPARED	12.12.2025		
DESIGNER	RMA INFRASTRUCTURE PTY LTD		
I CERTIFY THAT THE WORKS HAVE BEEN CONSTRUCTED IN ACCORDANCE WITH THE WORK AS CONSTRUCTED DRAWINGS			

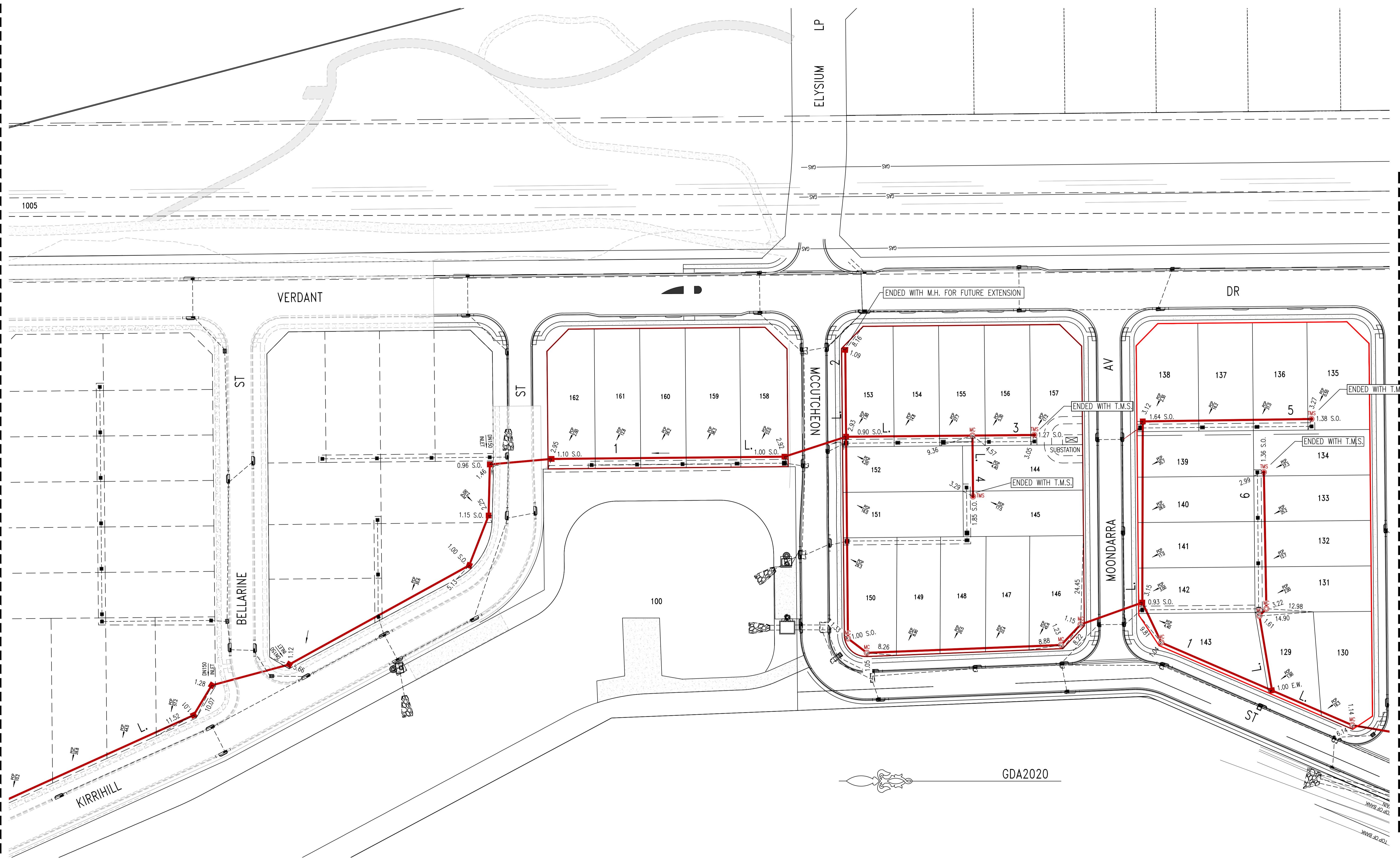


A1F

2

SHEET

REFER

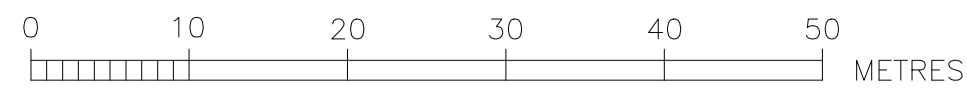


SHEET

REFER

PLAN DRAWN DATE: 12.12.2025 VERSION: 1 SHEET 3 OF 8 SHEETS

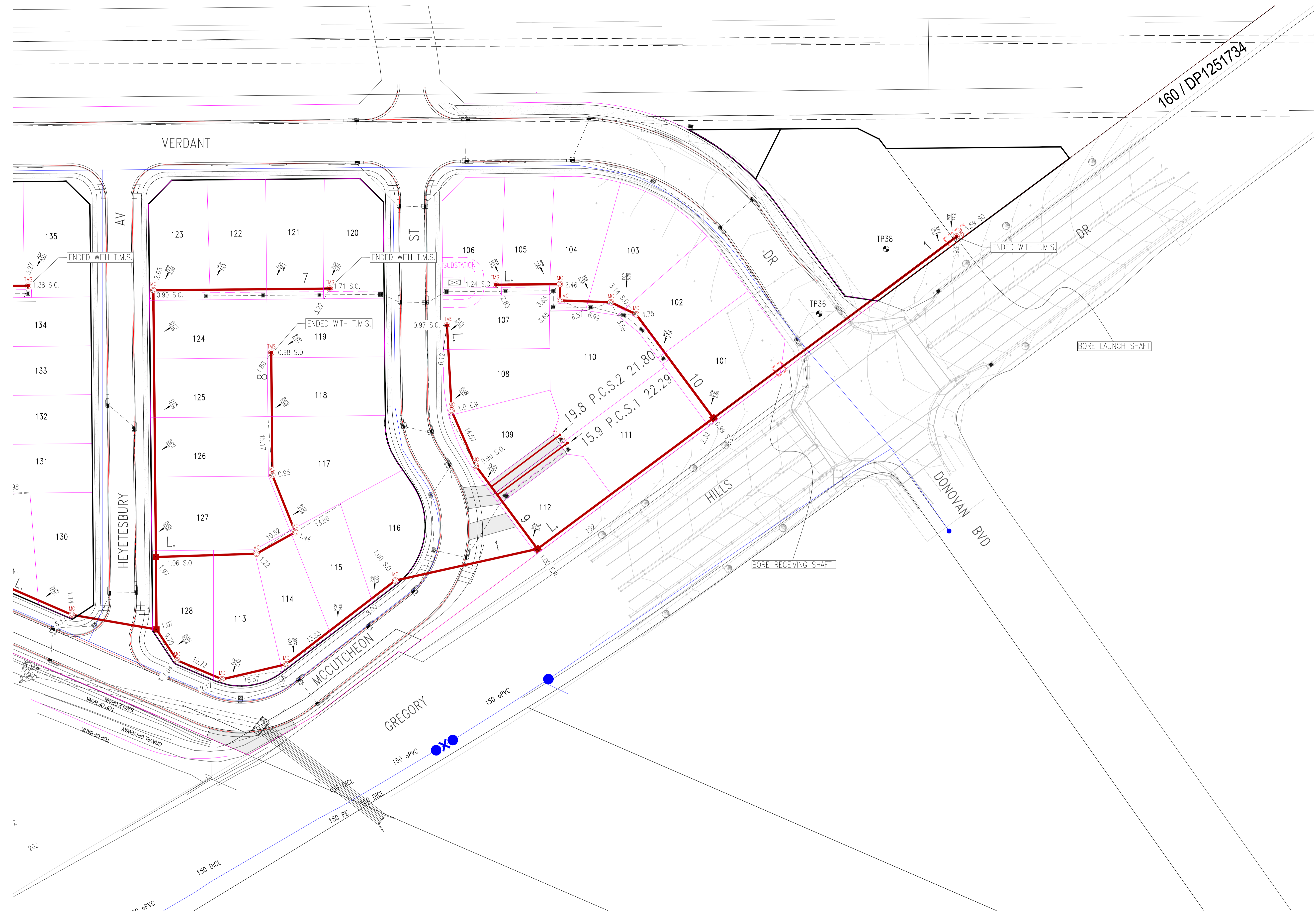
WORK AS CONSTRUCTED CERTIFICATION		SYDNEY WATER CORPORATION	
DEVELOPER	GDS PTY LTD		Case No. 211074WW SHT 3 OF 8 SHTS.
W.S.C.	RMA INFRASTRUCTURE PTY LTD		
CONSTRUCTOR	ADAM CHRISTOFIDES PLUMBING	FOR DETAILS OF SERVICES SEE SHEET 1	
COMPLETED	11.07.2025		
W.A.C. PREPARED	12.12.2025		
DESIGNER	RMA INFRASTRUCTURE PTY LTD		
I CERTIFY THAT THE WORKS HAVE BEEN CONSTRUCTED IN ACCORDANCE WITH THE WORK AS CONSTRUCTED DRAWINGS			



3

SHEET

REFER



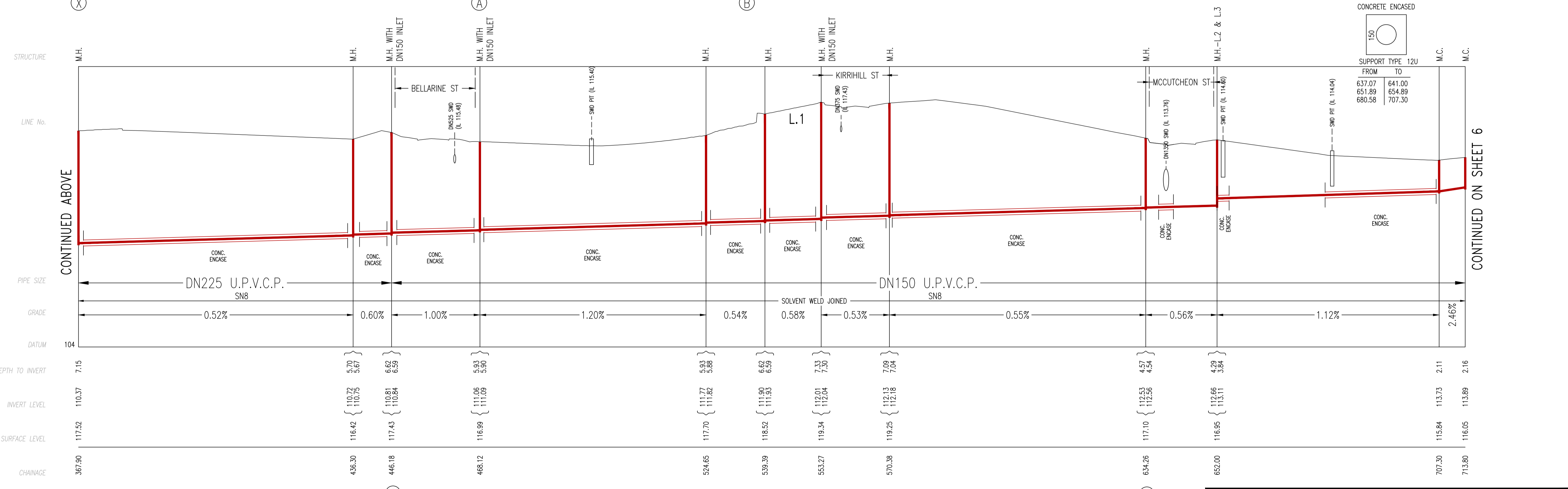
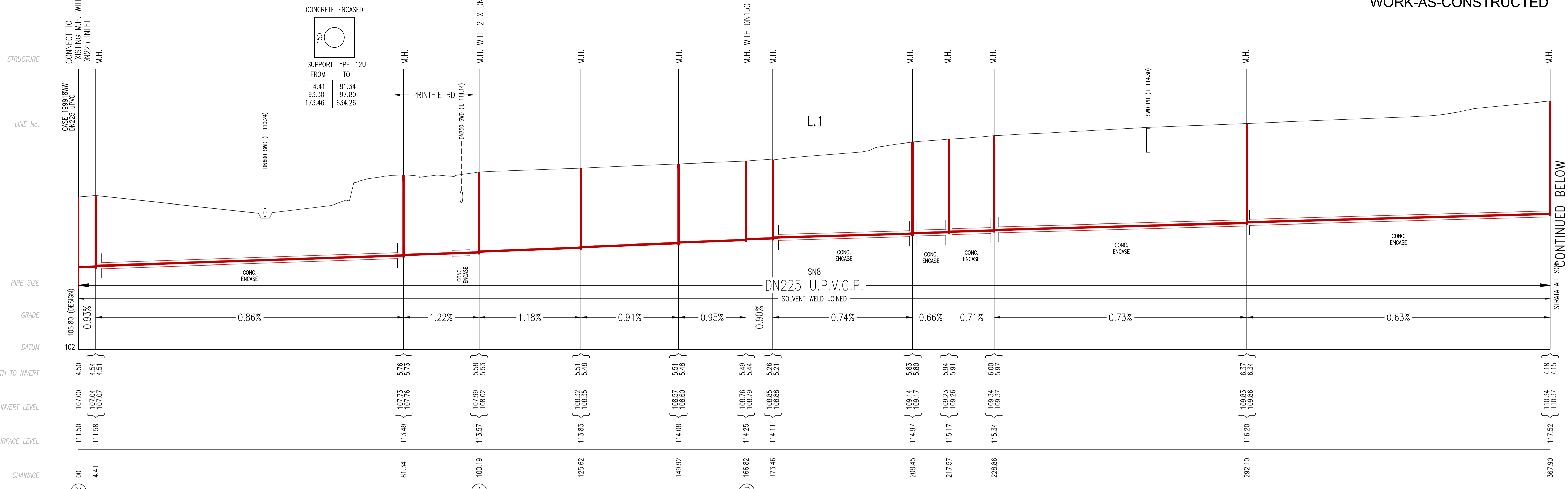
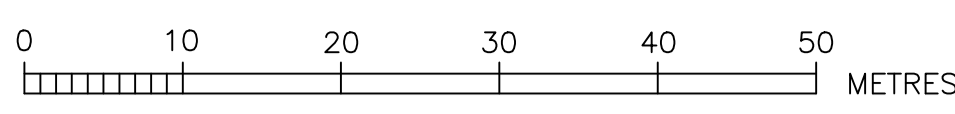
PLAN DRAWN DATE: 12.12.2025 VERSION: 1 SHEET 4 OF 8 SHEETS

GDA2020

WORK AS CONSTRUCTED CERTIFICATION		SYDNEY WATER CORPORATION	
DEVELOPER	GDS PTY LTD	<b>Sydney WATER</b>	
W.S.C.	RMA INFRASTRUCTURE PTY LTD		
CONSTRUCTOR	ADAM CHRISTOFIDES PLUMBING	Case No. 211074WW	SHT 4 OF 8 SHTS.
COMPLETED	11.07.2025	SYDNEY WATER CORPORATION FOR DETAILS OF SERVICES SEE SHEET 1	
W.A.C. PREPARED	12.12.2025		
DESIGNER	RMA INFRASTRUCTURE PTY LTD	I CERTIFY THAT THE WORKS HAVE BEEN CONSTRUCTED IN ACCORDANCE WITH THE WORK AS CONSTRUCTED DRAWINGS	

DEVELOPER CONTRACT PLAN  
WORK-AS-CONSTRUCTED

A1F



CONCRETE ENCASED

FROM	TO
4.41	81.34
93.30	97.80
173.46	634.26

SUPPORT TYPE 12U

CONCRETE ENCASED

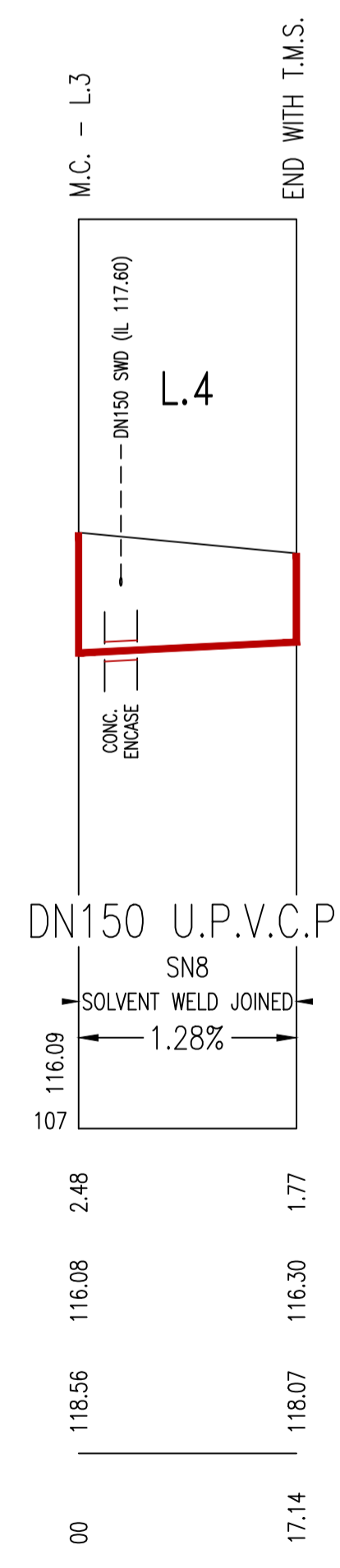
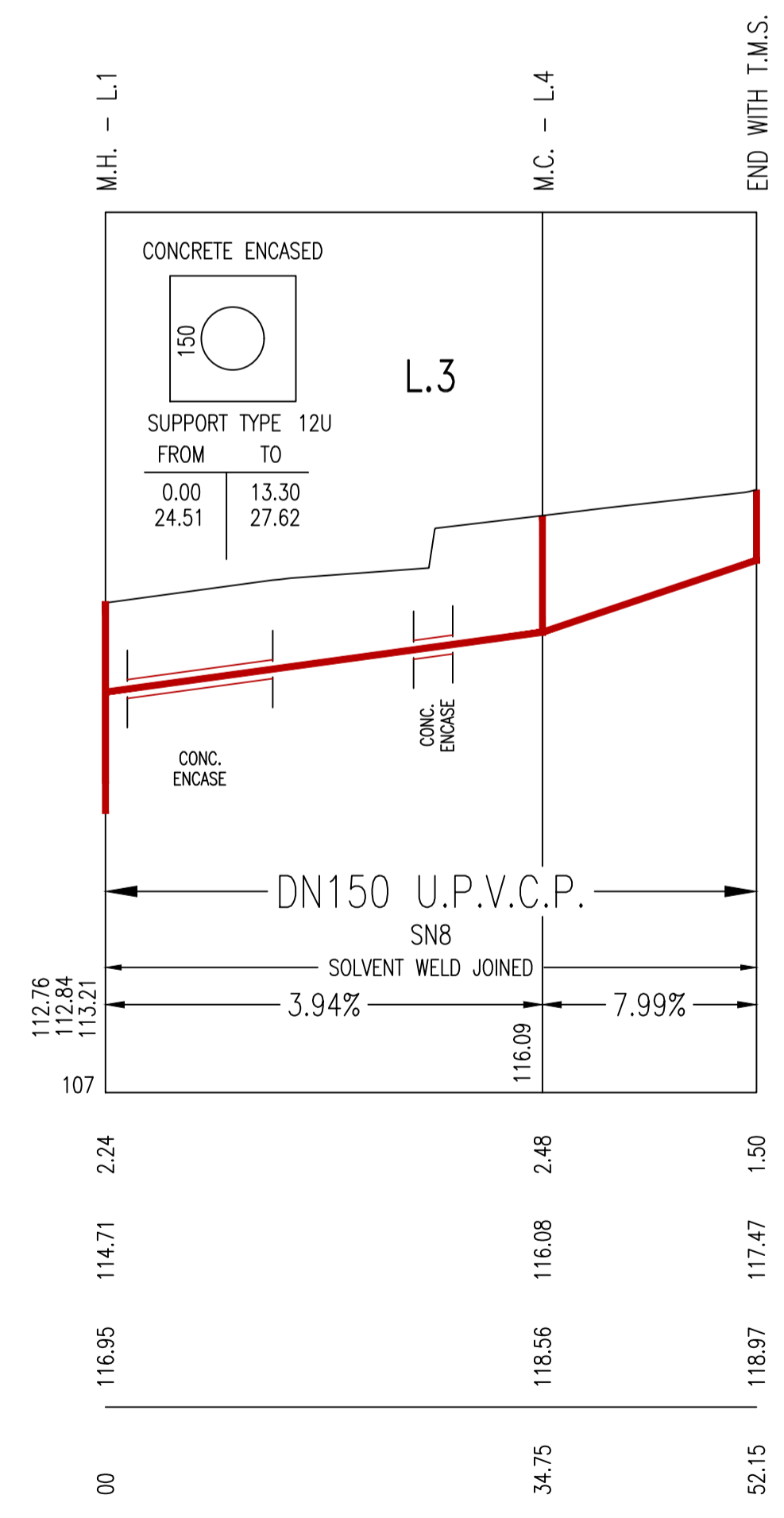
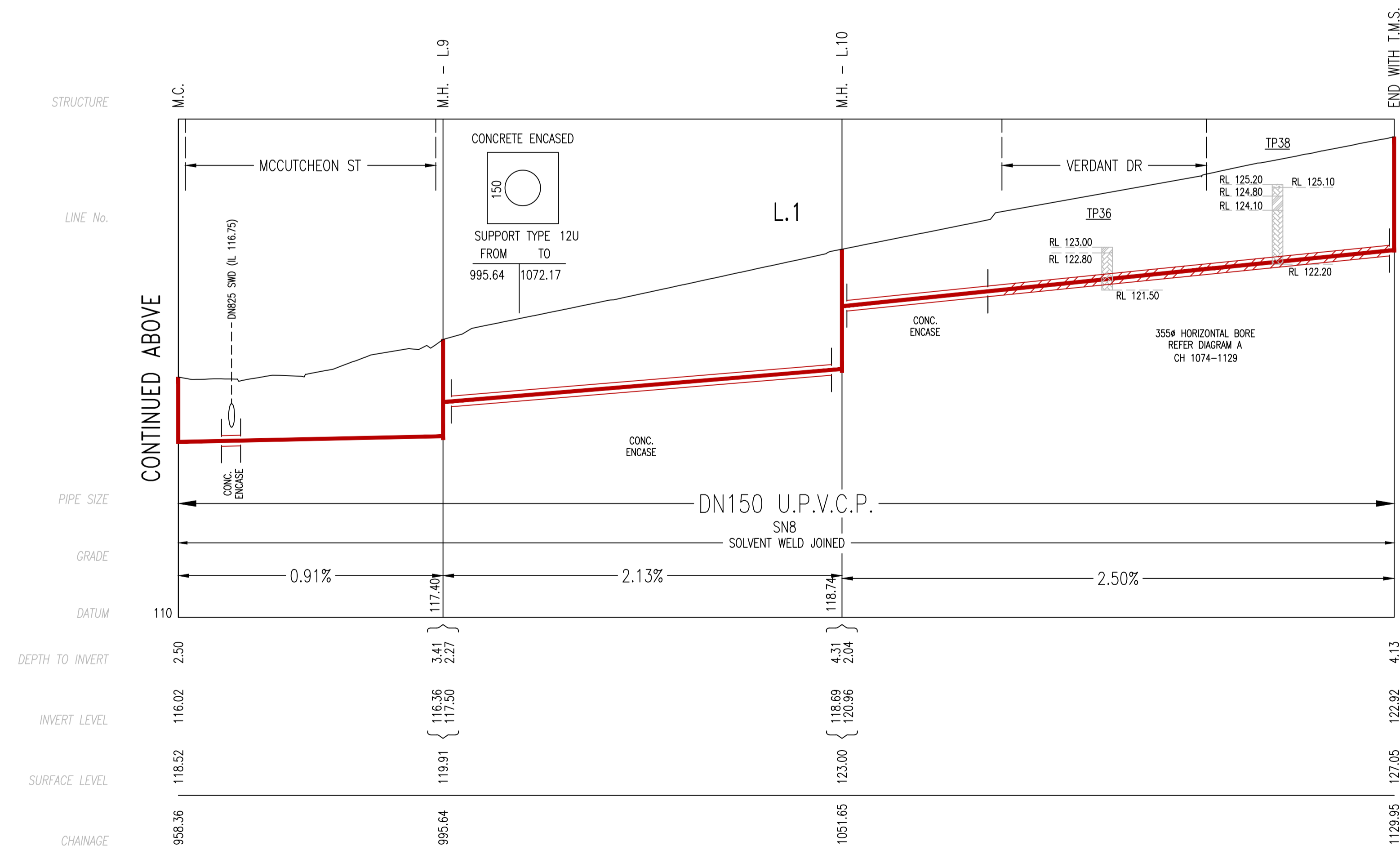
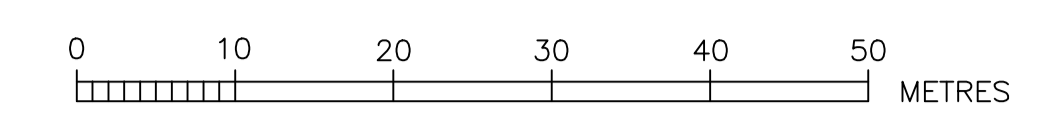
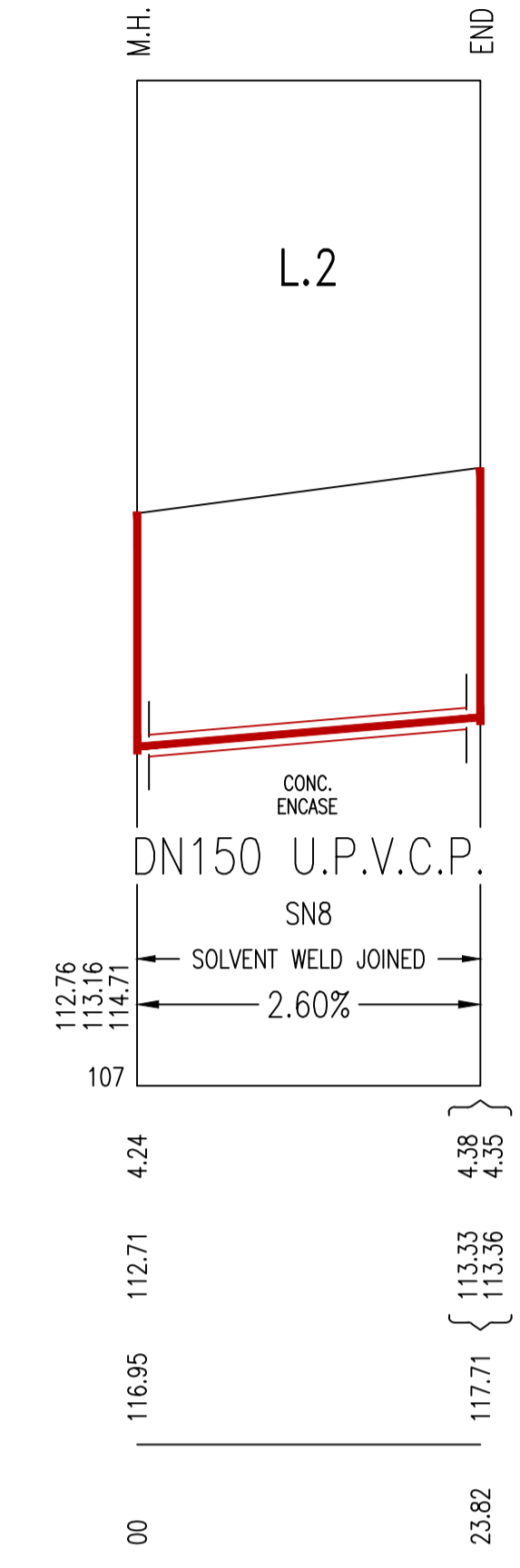
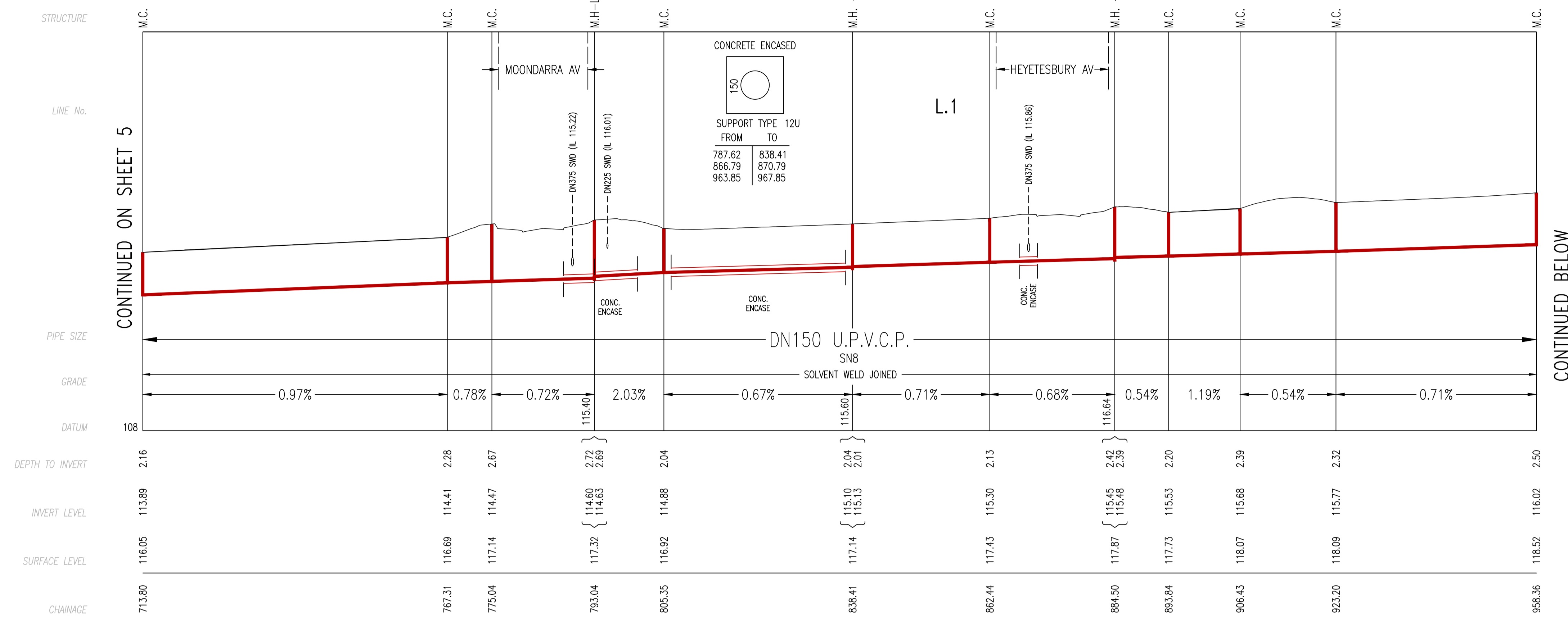
FROM	TO
637.07	641.00
651.89	654.89
680.58	707.30

SUPPORT TYPE 12U

WORK AS CONSTRUCTED CERTIFICATION		SYDNEY WATER CORPORATION	
DEVELOPER	GDS PTY LTD	<b>Sydney WATER</b>	Case No. 211074WW SHT 5 OF 8 SHTS.
W.S.C.	RMA INFRASTRUCTURE PTY LTD		
CONSTRUCTOR	ADAM CHRISTOFIDES PLUMBING	DESIGNER RMA INFRASTRUCTURE PTY LTD	
COMPLETED	11.07.2025	I CERTIFY THAT THE WORKS HAVE BEEN CONSTRUCTED IN ACCORDANCE WITH THE WORK AS CONSTRUCTED DRAWINGS	
W.A.C. PREPARED	12.12.2025	FOR DETAILS OF SERVICES SEE SHEET 1	

PLAN DRAWN DATE: 12.12.2025 VERSION: 1 SHEET 5 OF 8 SHEETS

WORK-AS-CONSTRUCTED

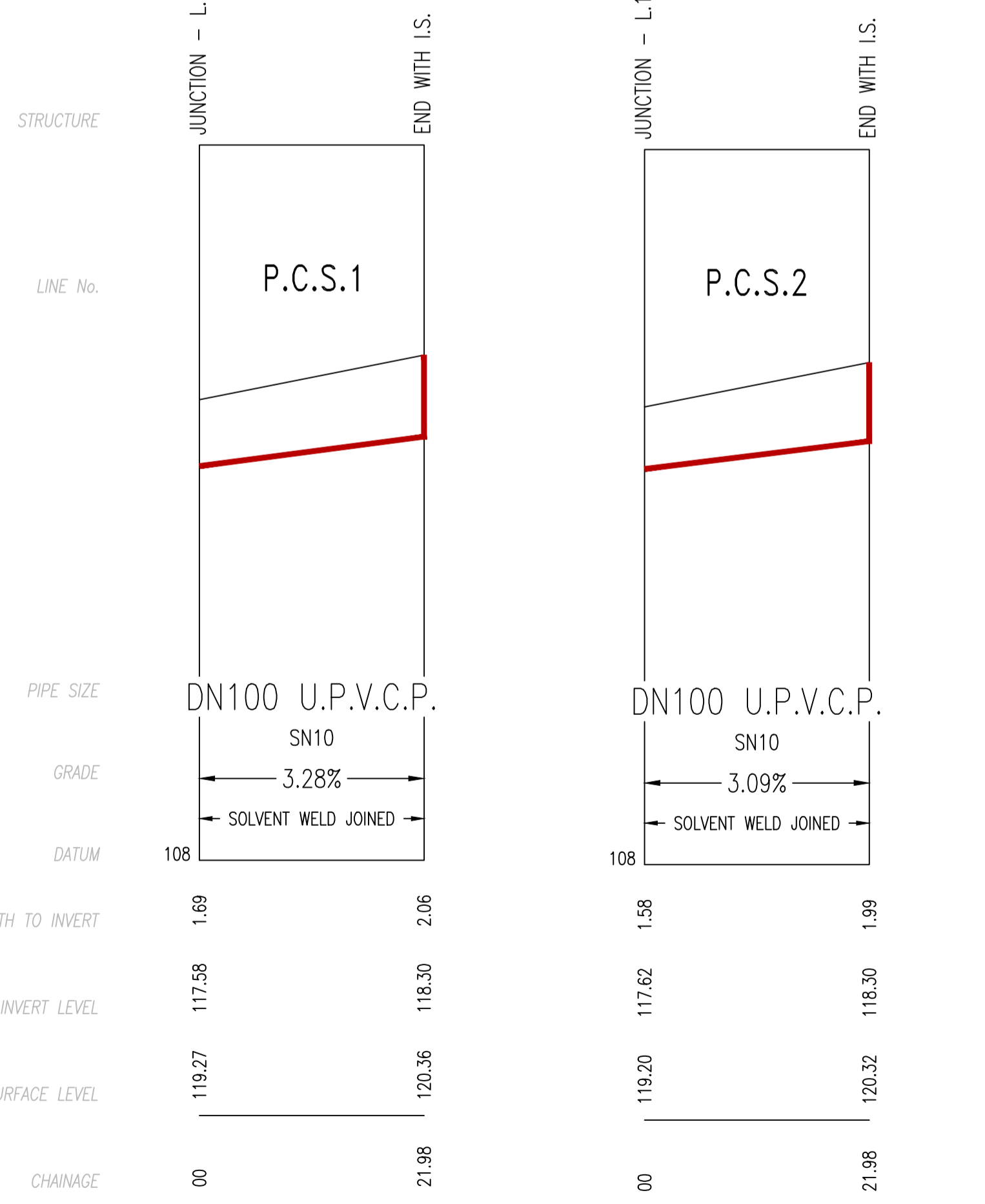
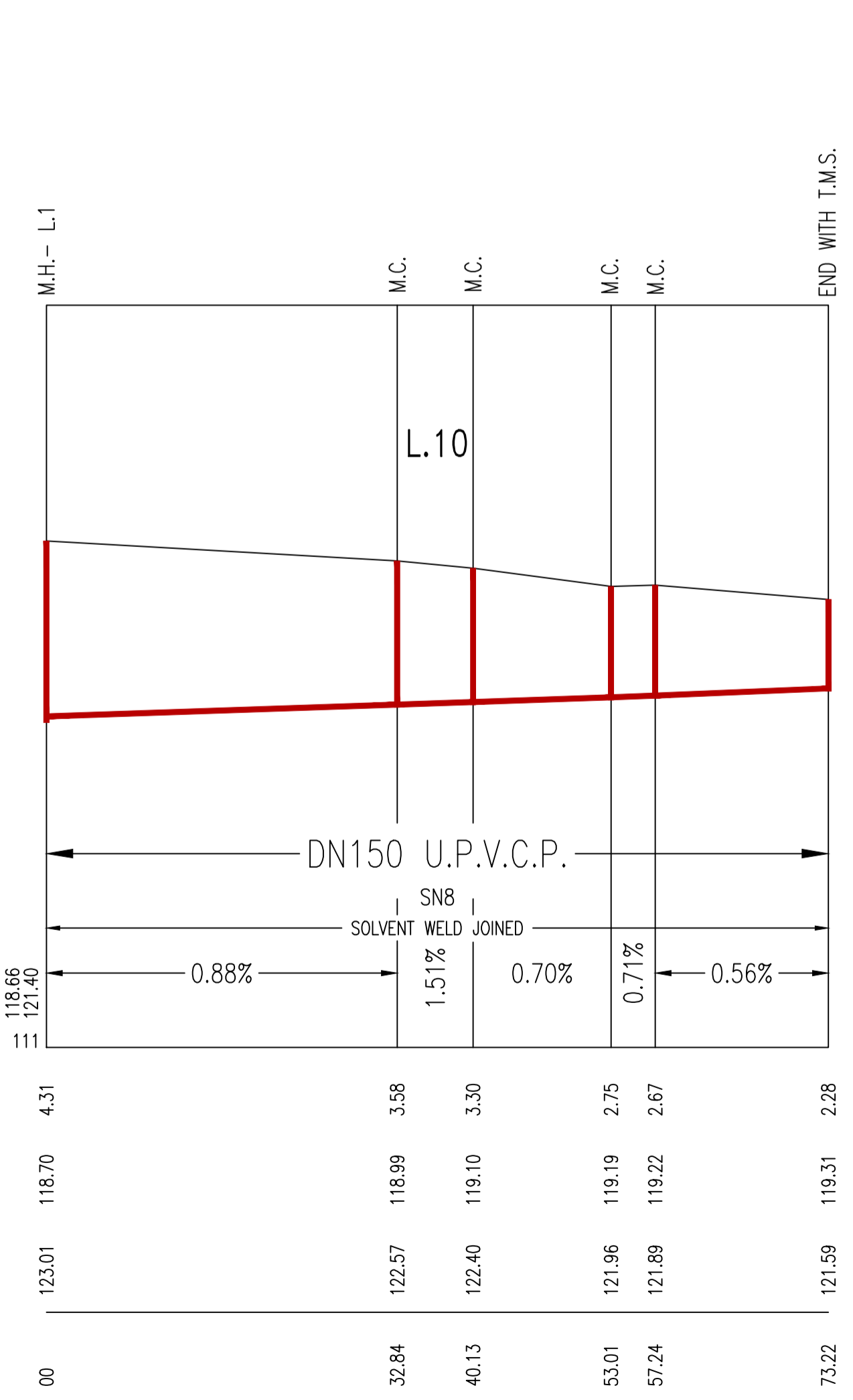
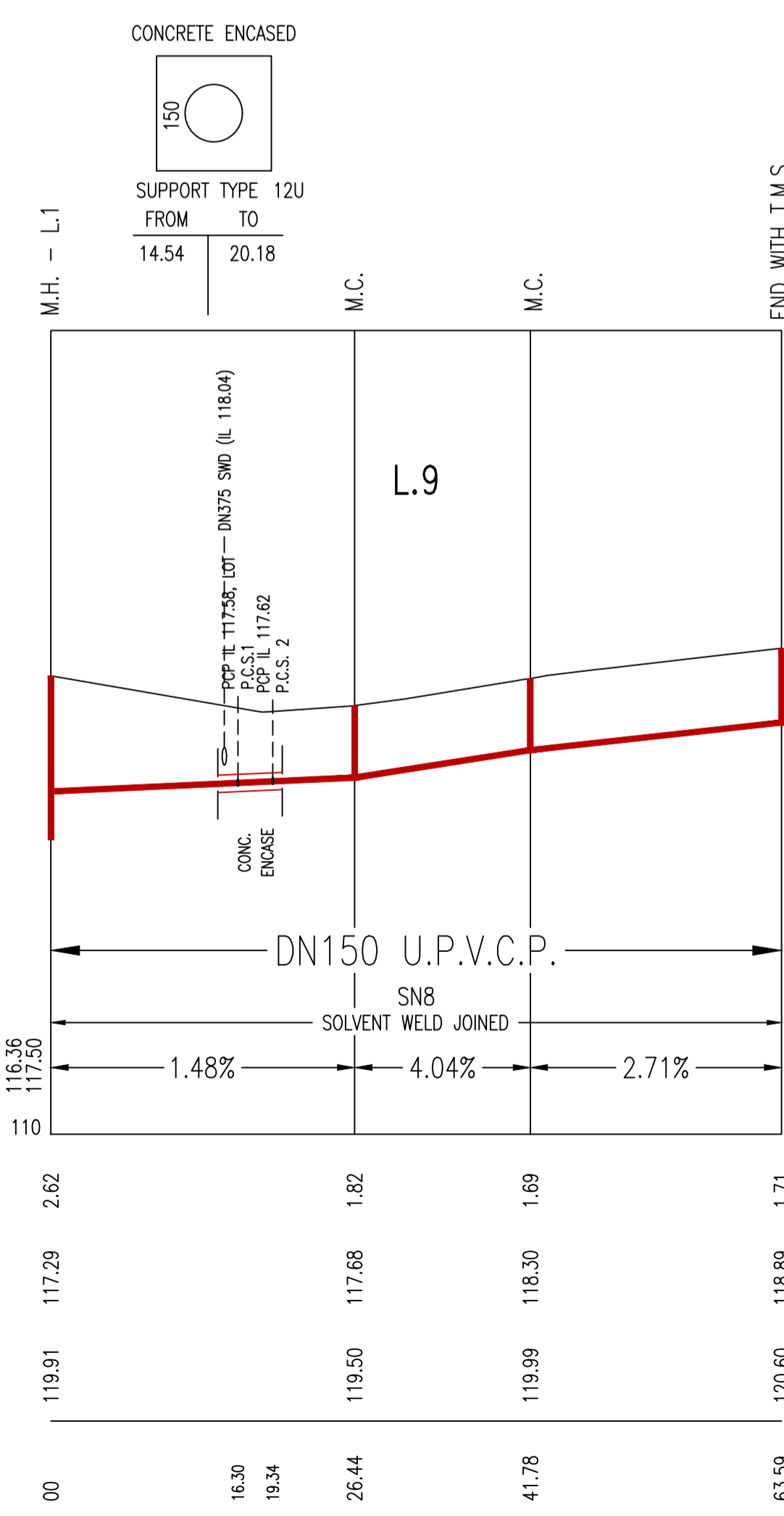
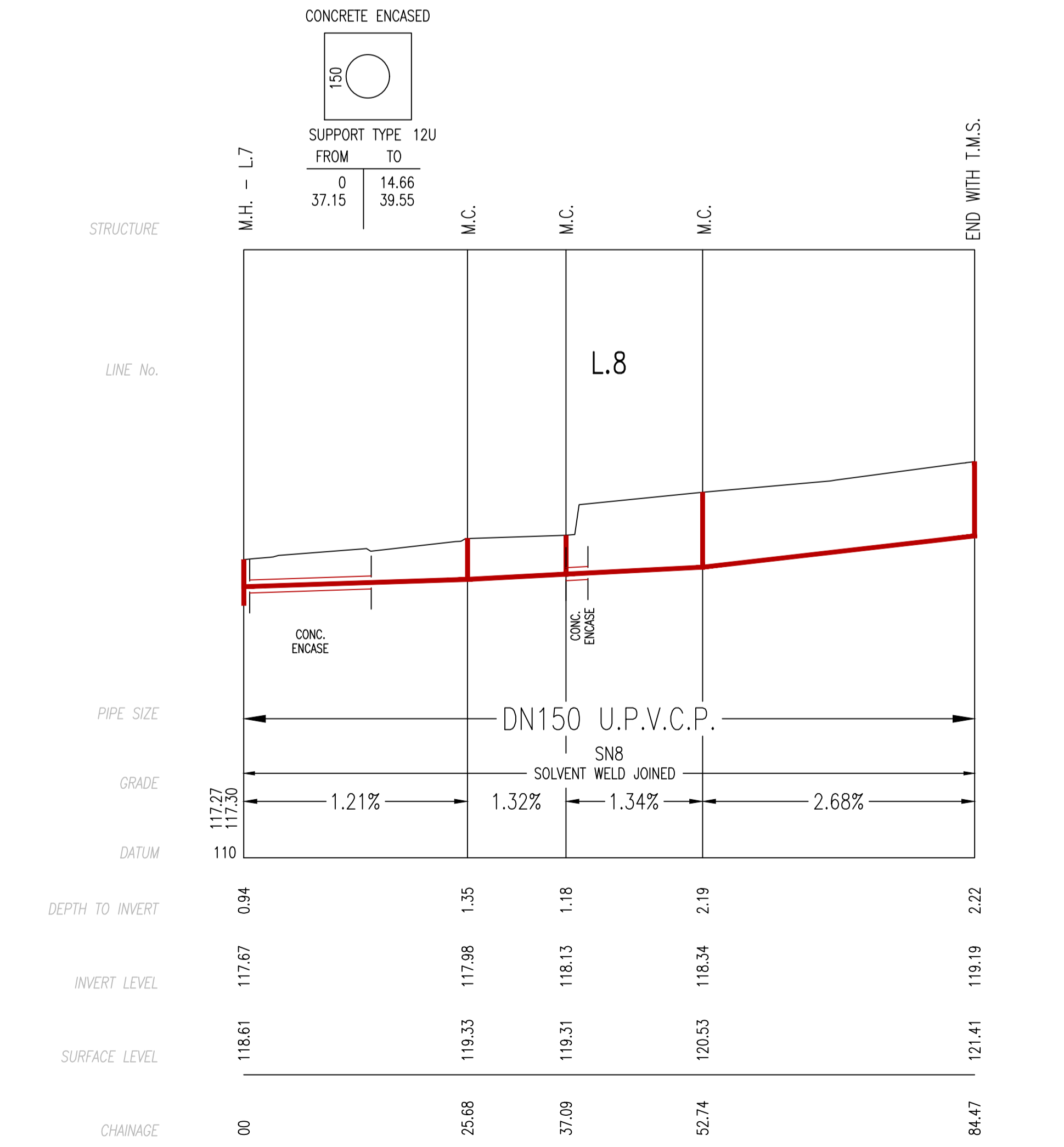
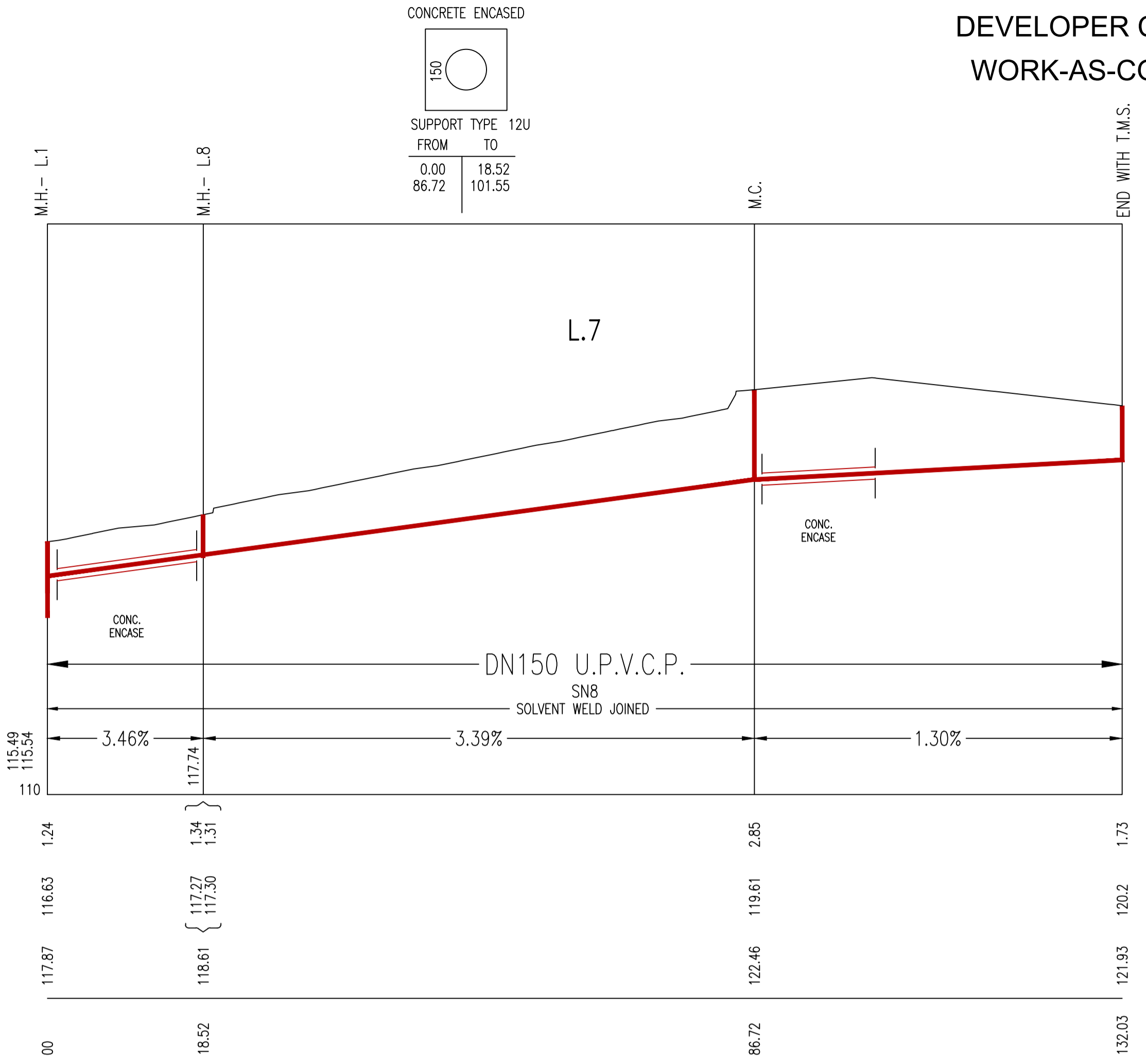
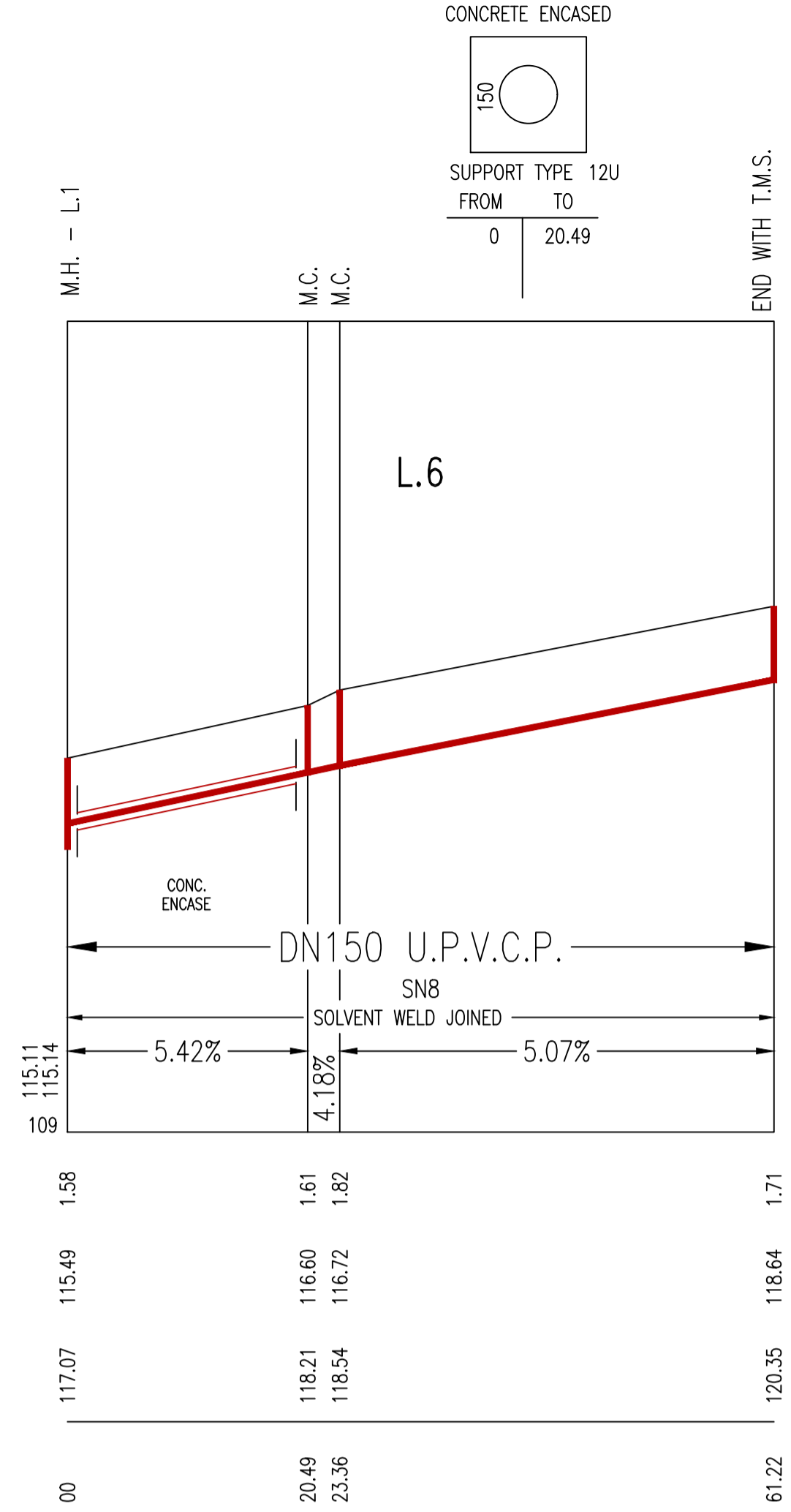
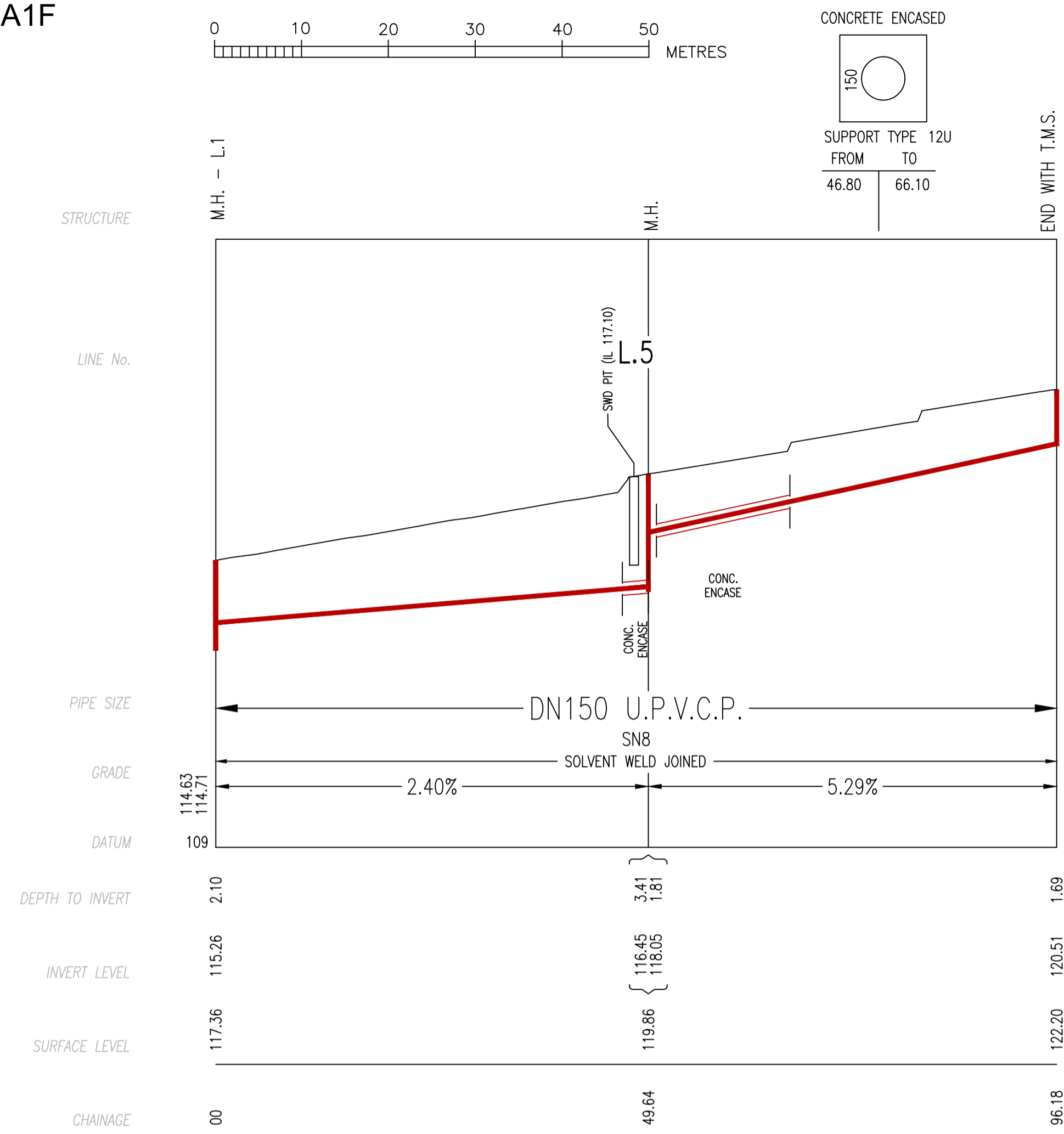


STRATA LEGEND

- SILTY CLAY
- SANDY GRAVEL
- FILL

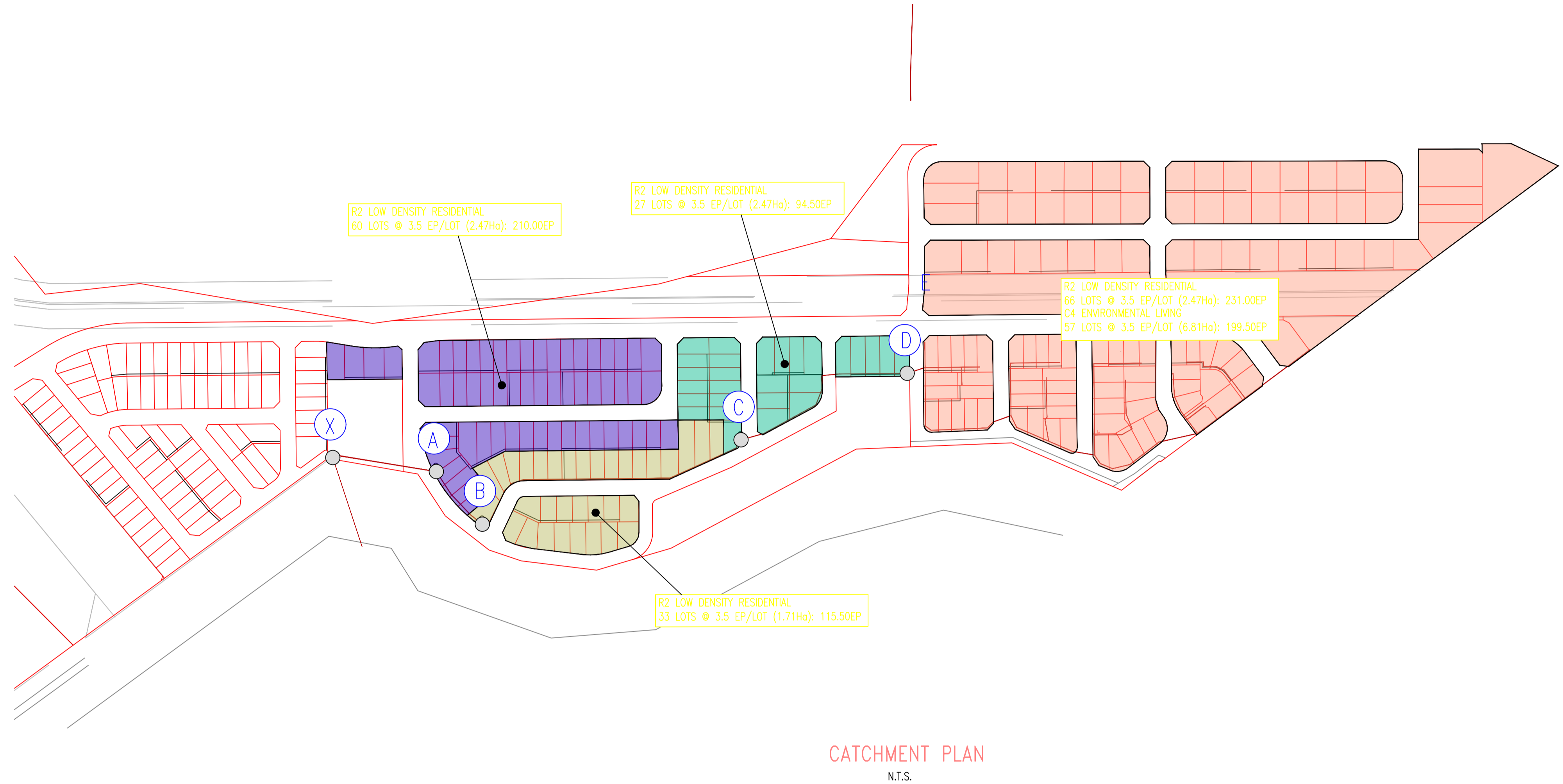
FOR DETAILED STRATA INFORMATION REFER TO GEOTECHNICAL REPORT BY GEOTECHNIQUE PTY LTD JOB NO. 20576/1 - 6th AUGUST 2024 BOREHOLES No. TP36 & TP38

<p>WORK AS CONSTRUCTED CERTIFICATION</p> <p>DEVELOPER GDS PTY LTD</p> <p>W.S.C. RMA INFRASTRUCTURE PTY LTD</p> <p>CONSTRUCTOR ADAM CHRISTOFIDES PLUMBING</p> <p>COMPLETED 11.07.2025</p> <p>W.A.C. PREPARED 12.12.2025</p>		<p>SYDNEY WATER CORPORATION</p> <p><b>Sydney WATER</b></p> <p>Case No. 211074WW SHT 6 OF 8 SHTS.</p>	
<p>DESIGNER RMA INFRASTRUCTURE PTY LTD</p> <p>I CERTIFY THAT THE WORKS HAVE BEEN CONSTRUCTED IN ACCORDANCE WITH THE WORK AS CONSTRUCTED DRAWINGS</p>		<p>SYDNEY WATER CORPORATION</p> <p>FOR DETAILS OF SERVICES SEE SHEET 1</p>	



WORK AS CONSTRUCTED CERTIFICATION		SYDNEY WATER CORPORATION	
DEVELOPER	GDS PTY LTD		
W.S.C.	RMA INFRASTRUCTURE PTY LTD		
CONSTRUCTOR	ADAM CHRISTOFIDES PLUMBING		
COMPLETED	11.07.2025		
W.A.C. PREPARED	12.12.2025	Case No. 211074WW	SHT 7 OF 8 SHTS.
DESIGNER: RMA INFRASTRUCTURE PTY LTD		SYDNEY WATER CORPORATION	
I CERTIFY THAT THE WORKS HAVE BEEN CONSTRUCTED IN ACCORDANCE WITH THE WORK AS CONSTRUCTED DRAWINGS		FOR DETAILS OF SERVICES SEE SHEET 1	

LINE	CHAINAGE	TYPE	CLASS OF COVER	DESIGN COMMENTS	SETOUT INFORMATION
L.1	0.00	EXISTING M.H. - WITH DN225 INLET	B		
L.1	4.41	M.H.	B	DTC 2203 - ISSUE C 31/07/2024	TIES ON PLAN
L.1	81.34	M.H.	D	DTC 2203 - ISSUE C 31/07/2024	TIES ON PLAN
L.1	100.19	M.H.	B	DTC 2203 - ISSUE C 31/07/2024	TIES ON PLAN
L.1	125.62	M.H.	B	DTC 2203 - ISSUE C 31/07/2024	TIES ON PLAN
L.1	149.92	M.H.	B	DTC 2203 - ISSUE C 31/07/2024	TIES ON PLAN
L.1	166.82	M.H.	B	DTC 2203 - ISSUE C 31/07/2024	TIES ON PLAN
L.1	173.46	M.H.	B	DTC 2203 - ISSUE C 31/07/2024	TIES ON PLAN
L.1	208.45	M.H.	B	DTC 2203 - ISSUE C 31/07/2024	TIES ON PLAN
L.1	217.57	M.H.	B	DTC 2203 - ISSUE C 31/07/2024	TIES ON PLAN
L.1	228.86	M.H.	B	DTC 2203 - ISSUE C 31/07/2024	TIES ON PLAN
L.1	292.10	M.H.	B	DTC 2200 - ISSUE G 31/07/2024	TIES ON PLAN
L.1	367.90	M.H.	B	DTC 2200 - ISSUE G 31/07/2024	TIES ON PLAN
L.1	436.30	M.H.	B	DTC 2200 - ISSUE G 31/07/2024	TIES ON PLAN
L.1	44.18	M.H.	B	DTC 2200 - ISSUE G 31/07/2024	TIES ON PLAN
L.1	488.12	M.H.	B	DTC 2203 - ISSUE C 31/07/2024	TIES ON PLAN
L.1	524.65	M.H.	B	DTC 2203 - ISSUE C 31/07/2024	TIES ON PLAN
L.1	539.39	M.H.	B	DTC 2200 - ISSUE G 31/07/2024	TIES ON PLAN
L.1	553.27	M.H.	B	DTC 2200 - ISSUE G 31/07/2024	TIES ON PLAN
L.1	570.38	M.H.	B	DTC 2200 - ISSUE G 31/07/2024	TIES ON PLAN
L.1	634.26	M.H.	B	DTC 2203 - ISSUE C 31/07/2024	TIES ON PLAN
L.1	652.00	M.H.	D	DTC 2203 - ISSUE C 31/07/2024	TIES ON PLAN
L.1	707.30	M.C.	B	REHAU or PLEX MIN. DN600 RISER	TIES ON PLAN
L.1	713.80	M.C.	B	REHAU or PLEX MIN. DN600 RISER	TIES ON PLAN
L.1	767.31	M.C.	B	REHAU or PLEX MIN. DN600 RISER	TIES ON PLAN
L.1	775.04	M.C.	B	REHAU or PLEX MIN. DN600 RISER	TIES ON PLAN
L.1	793.04	M.H.	B	DTC 2203 - ISSUE C 31/07/2024	TIES ON PLAN
L.1	805.35	M.C.	B	REHAU or PLEX MIN. DN600 RISER	TIES ON PLAN
L.1	838.41	M.H.	B	DTC 2203 - ISSUE C 31/07/2024	TIES ON PLAN
L.1	862.44	M.C.	B	REHAU or PLEX MIN. DN600 RISER	TIES ON PLAN
L.1	884.50	M.H.	B	DTC 2203 - ISSUE C 31/07/2024	TIES ON PLAN
L.1	893.84	M.C.	B	REHAU or PLEX MIN. DN600 RISER	TIES ON PLAN
L.1	906.43	M.C.	B	REHAU or PLEX MIN. DN600 RISER	TIES ON PLAN
L.1	923.20	M.C.	B	REHAU or PLEX MIN. DN600 RISER	TIES ON PLAN
L.1	958.36	M.C.	B	REHAU or PLEX MIN. DN600 RISER	TIES ON PLAN
L.1	995.64	M.H.	B	DTC 2203 - ISSUE C 31/07/2024	TIES ON PLAN
L.1	1051.65	M.H.	B	DTC 2203 - ISSUE C 31/07/2024	TIES ON PLAN
L.1	1129.95	T.M.S.	B	ATMROD OR EQUIV. MIN. DN300 RISER	TIES ON PLAN
L.2	0.00	M.H.	D	DTC 2203 - ISSUE C 31/07/2024	TIES ON PLAN
L.2	23.82	M.H.	B	DTC 2203 - ISSUE C 31/07/2024	TIES ON PLAN
L.3	0.00	M.H.	D	DTC 2203 - ISSUE C 31/07/2024	TIES ON PLAN
L.3	34.75	M.C.	B	REHAU or PLEX MIN. DN600 RISER	TIES ON PLAN
L.3	52.15	T.M.S.	B	ATMROD OR EQUIV. MIN. DN300 RISER	TIES ON PLAN
L.4	0.00	M.C.	B	REHAU or PLEX MIN. DN600 RISER	TIES ON PLAN
L.4	17.14	T.M.S.	B	ATMROD OR EQUIV. MIN. DN300 RISER	TIES ON PLAN
L.5	0.00	M.H.	B	DTC 2203 - ISSUE C 31/07/2024	TIES ON PLAN
L.5	49.64	M.H.	D	DTC 2203 - ISSUE C 31/07/2024	TIES ON PLAN
L.5	96.18	T.M.S.	B	ATMROD OR EQUIV. MIN. DN300 RISER	TIES ON PLAN
L.6	0.00	M.H.	B	DTC 2203 - ISSUE C 31/07/2024	TIES ON PLAN
L.6	20.49	M.C.	B	REHAU or PLEX MIN. DN600 RISER	TIES ON PLAN
L.6	23.36	M.C.	B	REHAU or PLEX MIN. DN600 RISER	TIES ON PLAN
L.6	61.22	T.M.S.	B	ATMROD OR EQUIV. MIN. DN300 RISER	TIES ON PLAN
L.7	0.00	M.H.	B	DTC 2203 - ISSUE C 31/07/2024	TIES ON PLAN
L.7	18.52	M.H.	B	DTC 2203 - ISSUE C 31/07/2024	TIES ON PLAN
L.7	86.72	M.C.	D	REHAU or PLEX MIN. DN600 RISER	TIES ON PLAN
L.7	132.03	T.M.S.	B	ATMROD OR EQUIV. MIN. DN300 RISER	TIES ON PLAN
L.8	0.00	M.H.	B	DTC 2203 - ISSUE C 31/07/2024	TIES ON PLAN
L.8	25.68	M.C.	B	REHAU or PLEX MIN. DN600 RISER	TIES ON PLAN
L.8	37.09	M.C.	B	REHAU or PLEX MIN. DN600 RISER	TIES ON PLAN
L.8	52.74	M.C.	B	REHAU or PLEX MIN. DN600 RISER	TIES ON PLAN
L.8	84.47	T.M.S.	B	ATMROD OR EQUIV. MIN. DN300 RISER	TIES ON PLAN
L.9	0.00	M.H.	B	DTC 2203 - ISSUE B 18.03.15	TIES ON PLAN
L.9	26.44	M.C.	B	REHAU or PLEX MIN. DN600 RISER	TIES ON PLAN
L.9	41.78	M.C.	B	REHAU or PLEX MIN. DN600 RISER	TIES ON PLAN
L.9	63.59	T.M.S.	B	ATMROD OR EQUIV. MIN. DN300 RISER	TIES ON PLAN
L.10	0.00	M.H.	B	DTC 2203 - ISSUE B 18.03.15	TIES ON PLAN
L.10	32.84	M.C.	B	REHAU or PLEX MIN. DN600 RISER	TIES ON PLAN
L.10	40.13	M.C.	B	REHAU or PLEX MIN. DN600 RISER	TIES ON PLAN
L.10	53.01	M.C.	B	REHAU or PLEX MIN. DN600 RISER	TIES ON PLAN
L.10	57.24	M.C.	B	REHAU or PLEX MIN. DN600 RISER	TIES ON PLAN
L.10	73.22	T.M.S.	B	ATMROD OR EQUIV. MIN. DN300 RISER	TIES ON PLAN



SEWERAGE FLOW SCHEDULE - LEAKTIGHT Sewers																					
Complied by:		S.PENELLUM			Date:		25.01.2025														
Checked by:		L.DENOORD			Date:		25.01.2025														
Plan No		211074WW			Location:		GLEDSWOOD HILLS			JOB No. (SWC use): 0											
e-Developer No.		211074WW			Description:		CATCHMENT PLAN			Date: 25-Jan-25 Flow Schedule Ver. May 2023											
SUMMARY																					
Section	Line No	Chainage	Pipe Status	Total Area Ha	Total Gravity EP	Total Grav + Pump EP	Pipe Material	Pipe Size (DN) mm	Pipe Size (ID) mm	Pipe Grade %	Design Flow (DF) L/s	Actual PDWF L/s	Qf (Capacity) L/s	Velocity @ Qf m/s	Velocity @ PDWF m/s	SHEAR STRESS Pa	Grade Check	Max EP Check for dia <=300	Self Cleansing	Slime Control	Capacity Check
A-X	L.1	00	NEW	15.93	851	851	PVC SN8	225	234	0.85	14.41	4.80	46.47	1.08	0.70	2.53		RETIC 2744EP MAX	Self Cleansing OK	NA - Reticulation	Capacity OK
B-A	L.1	100	NEW	13.46	641	641	PVC SN8	225	234	0.99	11.77	3.92	50.15	1.17	0.70	2.60		RETIC 3008EP MAX	Self Cleansing OK	NA - Reticulation	Capacity OK
C-B	L.1	167	NEW	11.75	525	525	PVC SN8	225	234	0.70	10.26	3.42	42.17	0.98	0.59	1.87		RETIC 2419EP MAX	Self Cleansing OK	NA - Reticulation	Capacity OK
D-C	L.1	446	NEW	9.28	431	431	PVC SN8	150	150	0.68	9.01	3.00	12.66	0.72	0.59	1.85		RETIC 556EP MAX	Self Cleansing OK	NA - Reticulation	Capacity OK

WORK AS CONSTRUCTED CERTIFICATION		SYDNEY WATER CORPORATION	
DEVELOPER	GDS PTY LTD		Case No. 211074WW SHT 8 OF 8 SHTS.
W.S.C.	RMA INFRASTRUCTURE PTY LTD		
CONSTRUCTOR	ADAM CHRISTOFIDES PLUMBING		
COMPLETED	11.07.2025		
W.A.C. PREPARED	12.12.2025	SYDNEY WATER CORPORATION	
DESIGNER	RMA INFRASTRUCTURE PTY LTD	FOR DETAILS OF SERVICES SEE SHEET 1	
I CERTIFY THAT THE WORKS HAVE BEEN CONSTRUCTED IN ACCORDANCE WITH THE WORK AS CONSTRUCTED DRAWINGS			