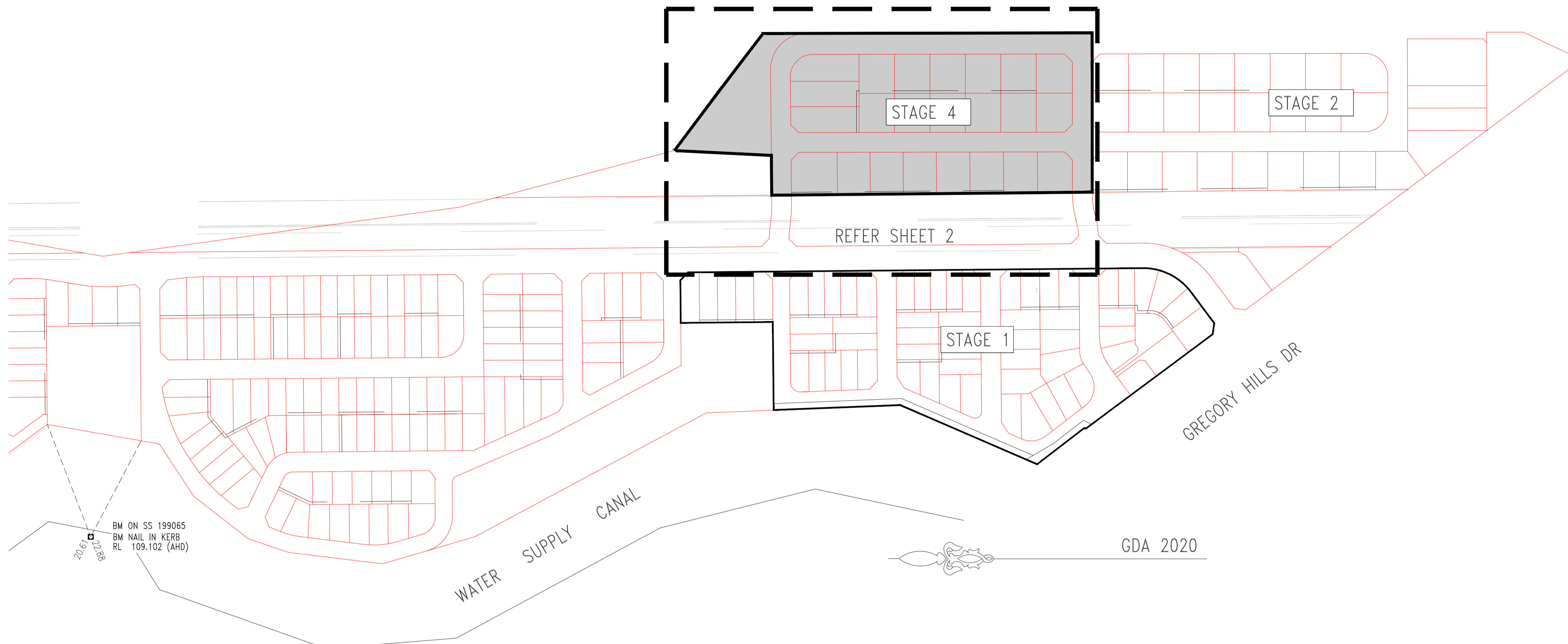
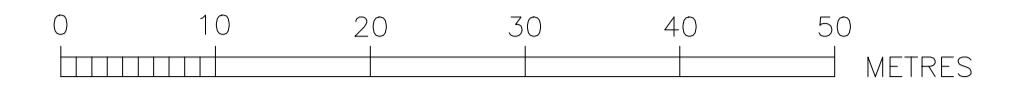


STAGE 4

WORK-AS-CONSTRUCTED



LOCALITY & BENCHMARK PLAN

NOTES :-

- DESIGNER & WATER SERVICE COORDINATOR:  
 RMA INFRASTRUCTURE PTY LTD  
 PO BOX 273 PENRITH NSW 2751  
 PH. 47222774. REFERENCE No. W-12404  
 FOR:  
 LEGACY PROPERTY SERVICES PTY LTD  
 LEVEL 45, 25 MARTIN PLACE,  
 SYDNEY NSW 2000  
 02 9252 1111
- THE WORKS AND MATERIAL WERE CONSTRUCTED IN ACCORDANCE WITH THE SEWER RETICULATION CODE OF AUSTRALIA (WSA 02-2002-2.2 VERSION 4) AND SYDNEY WATER TECHNICAL SPECIFICATION (CIVIL) Ver.11.
- ALL LOTS WERE VACANT AT TIME OF SURVEY.
- ALL STRUCTURES CONSTRUCTED TO FINISHED SURFACE LEVELS. ALL LEVELS QUOTED ON THIS PLAN REFER TO PROPOSED FINISHED SURFACE LEVELS. IT WAS THE CONTRACTORS RESPONSIBILITY TO LIAISE WITH THE CIVIL CONTRACTOR TO VERIFY THE PROPOSED SURFACE LEVELS QUOTED ON THIS PLAN WERE CORRECT PRIOR TO INSTALLING SEWER STRUCTURES. IF ANY DISCREPANCIES WERE FOUND, THE WATER SERVICING COORDINATOR WAS NOTIFIED IMMEDIATELY.
- PIPES CONCRETE ENCASED SHOWN ACCORDINGLY:  
 EACH SECTION OF PIPE CONCRETE ENCASED IN THE FOLLOWING MANNER :  
  - EACH FLEXIBLE PIPE JOINT REQUIRES A 12mm THICK COMPRESSIBLE MEMBRANE INSERTED.
  - AT THE ENDS OF EACH SECTION OF ENCASEMENT A 600mm ROCKER PIPE INSTALLED.
  - CONCRETE ENCASEMENT TYPE 12U AS PER SEW-1205 Ver3 (2016)
- AREAS HATCHED THUS NOT DRAINED:
- CURRENT SERVICES SEARCH & SITE CHECK OF ALL EXISTING SERVICES NECESSARY PRIOR TO THE COMMENCEMENT OF WORK & APPROPRIATE PROCEDURES, PRECAUTIONS AND CARE TAKEN BY THE CONSTRUCTOR WHEN WORKING IN CLOSE PROXIMITY TO SERVICES. THE CONSTRUCTOR WAS TO VERIFY THE EXACT LOCATION OF ALL EXISTING SERVICES DURING CONSTRUCTION AND ANY DAMAGE TO EXISTING SERVICES WAS RECTIFIED AT THE CONSTRUCTORS EXPENSE.
- FIELD COMPACTION TESTS REQUIRED UNDERTAKEN TO SATISFY THE SEWAGE CODE OF AUSTRALIA SYDNEY WATER EDITION 1 - VERSION 4 (WSA 02-2002-2.2 VERSION 4) & SYDNEY WATER TECHNICAL SPECIFICATION CIVIL v 11. IT WAS THE LISTED FIELD TESTERS RESPONSIBILITY TO ENSURE THE CORRECT NUMBER OF TESTS WERE CARRIED OUT TO SATISFY THE STANDARDS AND SPECIFICATIONS AS PER INSTRUCTIONS TO FIELD TESTERS CLAUSE 3. COMPACTION TEST = 24 TESTS TOTAL.
- JUNCTION AND CONCRETE ENCASEMENT LOCATIONS WERE SHOWN AS APPROXIMATE ONLY. IT WAS THE CONSTRUCTORS RESPONSIBILITY TO LIAISE WITH CIVIL CONTRACTOR TO CONFIRM EXACT LOCATIONS REQUIRED. THE CONSTRUCTOR WAS RESPONSIBLE TO KEEP AN ACCURATE RECORD OF JUNCTION AND CONCRETE ENCASEMENT CHAINAGES DURING CONSTRUCTION. CHAINAGES WERE PROVIDED TO THE DESIGNER AT THE COMPLETION OF CONSTRUCTION.
- PROPERTY CONNECTIONS (PCS) INSTALLED IN ACCORDANCE WITH SEWAGE CODE OF AUSTRALIA WSA 02-2002-2.2  
 - PCS DN100 UNLESS NOTED OTHERWISE.  
 - PCS CONFIGURATION BASED ON RETICULATION DEPTH PROPERTY SIZE & TOPOGRAPHY  
 DENOTES STANDARD PCS CONNECTION - SEW-1151-S 12.
- ALL MAINTENANCE CHAMBERS REHAU/PLEX OR EQUIVALENT TYPE MANUFACTURED WITH PRE DESIGNED ANGLE WITH MINIMUM 600MM RISER.
- MAINTENANCE HOLES CONSTRUCTED IN ACCORDANCE WITH SYDNEY WATER DEEMED TO COMPLY DRAWINGS DTC 2000, DTC 2203, DTC 2220, DTC 2221, DTC 2222 AND AS SPECIFIED IN WSA 02-2002-2.2
- THE CONTRACTOR WAS TO CONFIRM THE LOCATION AND INVERT LEVELS OF THE EXISTING SEWER AT CHAINAGE 0.00 OF LINE 1 PRIOR TO COMMENCEMENT OF WORKS. ANY DISCREPANCIES WERE DETERMINED BETWEEN WHAT WAS LOCATED ON SITE AND WHAT WAS QUOTED ON THIS PLAN, THE DESIGNER WAS NOTIFIED IMMEDIATELY.
- DENOTES PROPOSED LOTS PROVIDED WITH PCP POINTS AS PART OF CASE 211075WW.



ENVIRONMENTAL REQUIREMENTS.

- THE REVIEW OF ENVIRONMENTAL FACTORS WAS AN INTEGRAL PART OF THIS DESIGN. ALL EROSION AND SEDIMENTATION CONTROL COMPLIED TO THE STANDARDS OF THE SOIL CONSERVATION SERVICE OF N.S.W
- ALL OPEN STORM WATER GRATES & STORM WATER CHANNELS DOWNSTREAM OF CONSTRUCTION ACTIVITY ADEQUATELY PROTECTED BY STRAW BALES OR GEOTEXTILE FENCE.
- SILT STOP DEVICES INSTALLED PRIOR TO ANY CONSTRUCTION ACTIVITY, EFFECTIVELY MAINTAINED AND REMOVED ONLY AFTER THE AREA HAS BEEN SATISFACTORILY RE - VEGETATED.
- SILTATION CONTROL CARRIED OUT TO THE SATISFACTION OF THE SITE SUPERINTENDENT.
- ALL STOCKPILES OF EXCAVATED MATERIAL SURROUNDED BY STRAW BALES AND/OR GEOTEXTILE FENCE TO THE SATISFACTION OF THE SUPERINTENDENT.
- SITE RESTORATION CARRIED OUT TO THE SATISFACTION OF THE SUPERINTENDENT.
- NO TREES OR VEGETATION REMOVED WITHOUT PRIOR APPROVAL FROM THE SUPERINTENDENT AND OR LOCAL GOVERNMENT AUTHORITY.

DTC DRAWING SCHEDULE		
DRAWING	REVISION	DATE
2000	D	31/07/2024
2203	C	31/07/2024
2220	E	31/07/2024
2221	D	31/07/2024
2222	D	31/07/2024

No.	AMENDMENT DESCRIPTION	BY	DATE
G	WORK AS CONSTRUCTED	A.M	03.02.26
F	AMENDMENTS TO MATCH LATEST CIVILS	SP	14.6.25
E	EASEMENT LABELLED	LD	13.03.25
D	AMENDED TO SUIT CIVILS	SP	30.11.24
C	CONNECTING CASE AMENDED	SP	21/8/24
B	UPDATED FOR SWC APPROVAL	SP	31/05/24
A	FIRST ISSUE - TENDER	BK	06.05.24

PLAN TO BE READ IN CONJUNCTION WITH CURRENT SYDNEY WATER STANDARDS SYDNEY WATER CORPORATION

PRIOR TO COMMENCEMENT OF EXCAVATION FOR PROPOSED AND EXISTING SERVICES CONTACT :-  
 DIAL BEFORE YOU DIG Ph. 1100  
 ELECTRICITY Ph.  
 GAS Ph.  
 TELECOMMUNICATIONS Ph.  
 GIVING AT LEAST 48 HOURS NOTICE.

UTILITIES			
TYPE	DATE	REF.	
PROP. STORMWATER: SWD	28.03.25		

WORK AS CONSTRUCTED CERTIFICATION			
DEVELOPER	LEGACY PROPERTY SERVICES PTY LTD		
WATER SERVICE CO-ORDINATOR	RMA INFRASTRUCTURE PTY LTD.		
CONSTRUCTOR	ADAM CHRISTOFIDES PLUMBING		
COMPLETED	03.02.26	W.A.C. PREPARED	03.02.26
DESIGNER	RMA INFRASTRUCTURE PTY LTD.		
I CERTIFY THAT THE WORKS HAVE BEEN CONSTRUCTED IN ACCORDANCE WITH THE WORK AS CONSTRUCTED DRAWINGS.			

PIPE SCHEDULE			
SIZE DN	TYPE	CLASS	LENGTH
150	U.P.V.C.	SN8	432.64
			S.W.J

DESIGN-HEAD m NO BOUNDARY TRAPS REQUIRED.

AUSTRALIAN HEIGHT DATUM	
SCALES	
PLAN 1:500	SECTION HOR. 1:500
	VERT. 1:125
CROSS SECTIONS NATURAL	
LENGTHS, DEPTHS & LEVELS ARE IN METRES.	

NO AMENDMENTS ARE TO BE MADE TO THIS PLAN WITHOUT REFERENCE TO SYDNEY WATER. THIS PLAN IS NOT NECESSARILY UP TO DATE OR CORRECT AND SYDNEY WATER ACCEPTS NO RESPONSIBILITY.

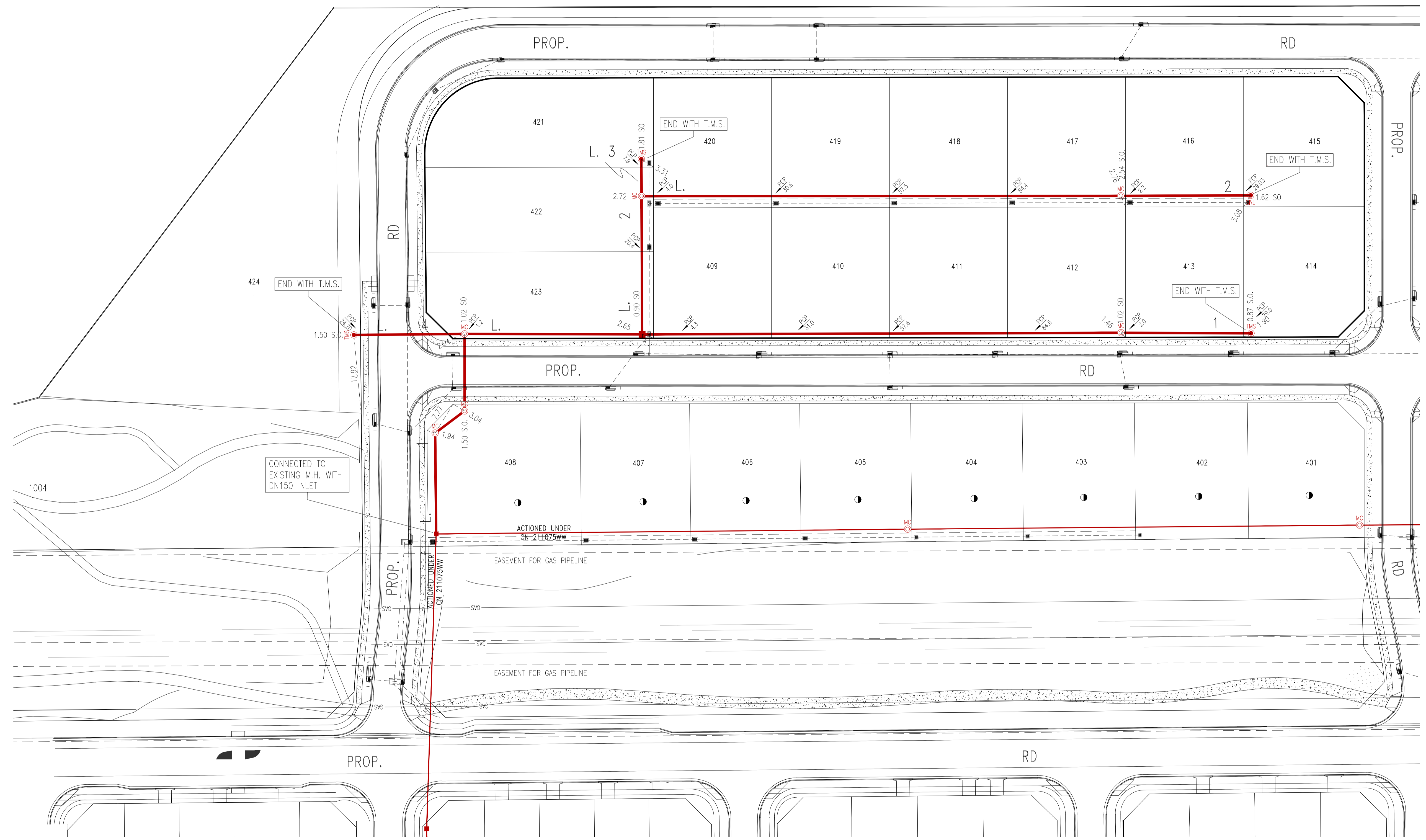
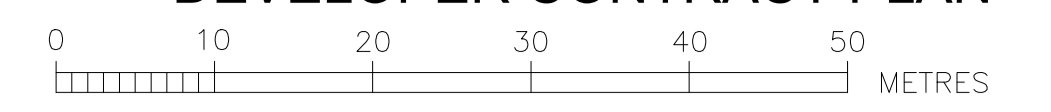
U.B. DIRECTORY MAP 326 REF: A2 UBD 41st

SHEET 1 OF 3 File No. N/A

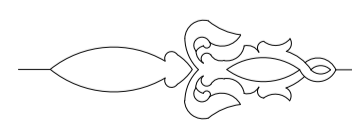
**Sydney WATER** SYDNEY WATER CORPORATION

Case No. 214918WW

**CAMDEN SEWERAGE**  
 DRAINS TO  
 WIANAMATTA CARR. & SPS 1156  
 WEST CAMDEN S.T.P.

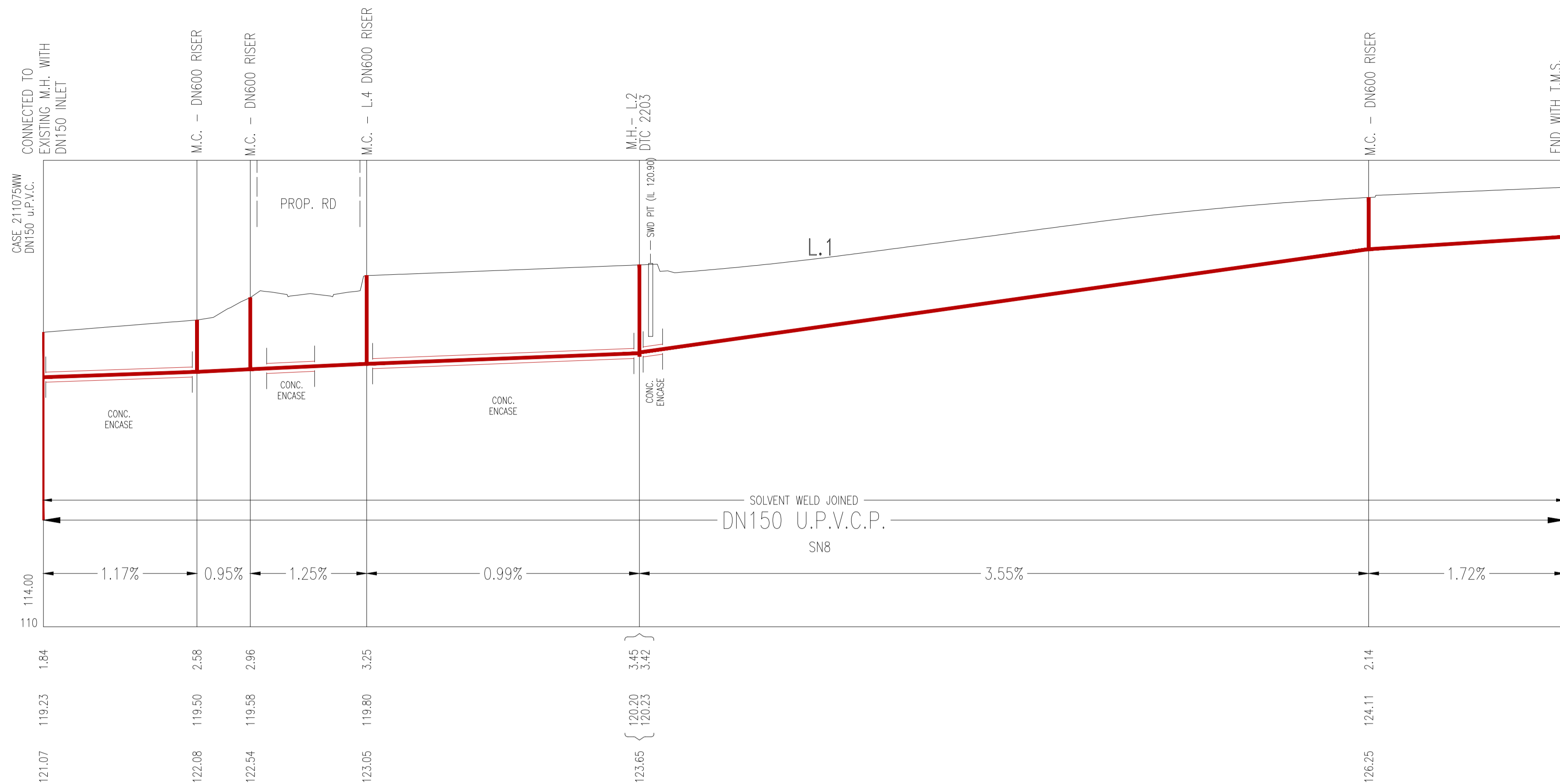
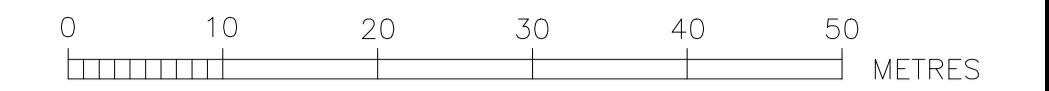


SITE PLAN  
SCALE 1 : 500



PLAN DRAWN DATE: 03.02.26  
VERSION: G  
SHEET 2 OF 3 SHEETS

WORK AS CONSTRUCTED CERTIFICATION		SYDNEY WATER CORPORATION	
DEVELOPER	LEGACY PROPERTY SERVICES PTY LTD	<b>Sydney WATER</b>	Case No. 214918WWW SHT 2 OF 3 SHTS.
W.S.C.	RMA INFRASTRUCTURE PTY LTD		
CONSTRUCTOR	ADAM CHRISTOFIDES PLUMBING	SYDNEY WATER CORPORATION FOR DETAILS OF SERVICES SEE SHEET 1	
COMPLETED	03.02.26		
W.A.C. PREPARED	03.02.26	DESIGNER: RMA INFRASTRUCTURE PTY LTD	
I CERTIFY THAT THE WORKS HAVE BEEN CONSTRUCTED IN ACCORDANCE WITH THE WORK AS CONSTRUCTED DRAWINGS			



CONCRETE ENCASED

SUPPORT TYPE 12U

FROM	TO
0.00	23.00
35.32	38.32
49.00	89.20

CONCRETE ENCASED

SUPPORT TYPE 12U

FROM	TO
89.56	91.86

CONCRETE ENCASED

SUPPORT TYPE 12U

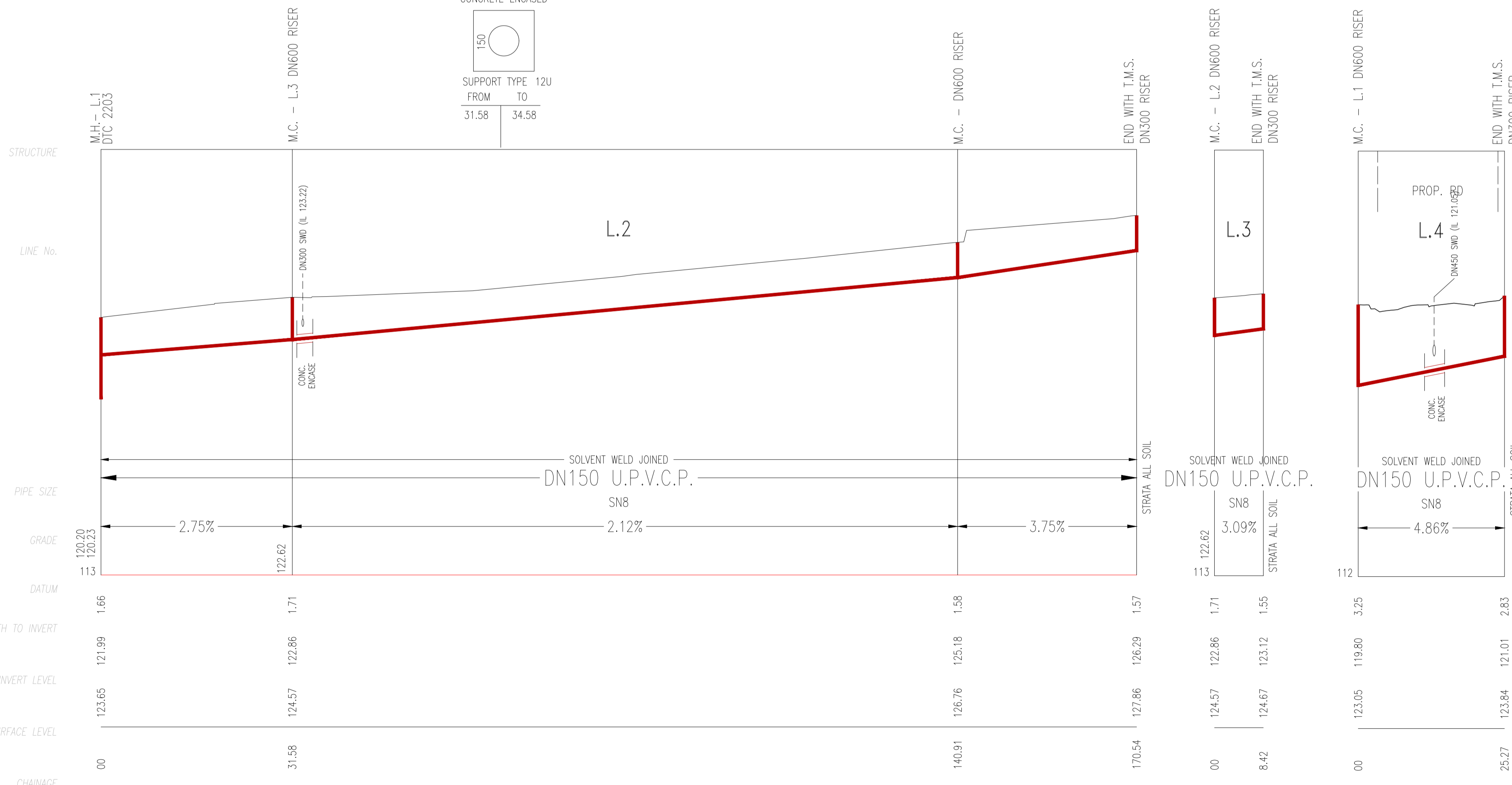
FROM	TO
31.58	34.58

MAINTENANCE STRUCTURE SCHEDULE					
LINE	CHAINAGE	TYPE	CLASS OF COVER	DESIGN COMMENTS	SETOUT INFORMATION
L.1	0.00	EXTEND DN150 INLET PROVIDED IN EXISTING MH	B	PROPOSED MH CN211075	TIES ON PLAN
L.1	23.00	M.C.	B	REHAU OR IPLEX MIN. DN600 RISER	TIES ON PLAN
L.1	31.40	M.C.	B	REHAU OR IPLEX MIN. DN600 RISER	TIES ON PLAN
L.1	48.97	M.C. - L.4	B	REHAU OR IPLEX MIN. DN600 RISER	TIES ON PLAN
L.1	89.56	M.H. - L.2	B	DTC 2203 - ISSUE B 18.03.15	TIES ON PLAN
L.1	198.74	M.C.	B	REHAU OR IPLEX MIN. DN600 RISER	TIES ON PLAN
L.1	228.41	T.M.S.	B	AYMROO OR EQUIV. WITH DN300 RISER	TIES ON PLAN
L.2	0.00	M.H. - L.1	B	DTC 2203 - ISSUE B 18.03.15	TIES ON PLAN
L.2	31.58	M.C. - L.3	B	REHAU OR IPLEX MIN. DN600 RISER	TIES ON PLAN
L.2	140.91	M.C.	B	REHAU OR IPLEX MIN. DN600 RISER	TIES ON PLAN
L.2	170.54	T.M.S.	B	AYMROO OR EQUIV. WITH DN300 RISER	TIES ON PLAN
L.3	0.00	M.C. - L.2	B	REHAU OR IPLEX MIN. DN600 RISER	TIES ON PLAN
L.3	8.42	T.M.S.	B	AYMROO OR EQUIV. WITH DN300 RISER	TIES ON PLAN
L.4	0.00	M.C. - L.1	B	REHAU OR IPLEX MIN. DN600 RISER	TIES ON PLAN
L.4	25.27	T.M.S.	B	AYMROO OR EQUIV. WITH DN300 RISER	TIES ON PLAN

CONCRETE ENCASED

SUPPORT TYPE 12U

FROM	TO
11.00	14.00



WORK AS CONSTRUCTED CERTIFICATION		Sydney WATER SYDNEY WATER CORPORATION	
DEVELOPER	LEGACY PROPERTY SERVICES PTY LTD	Case No.	214918WWW
W.S.C. RMA INFRASTRUCTURE PTY LTD		SHT	3 OF 3 SHTS.
CONSTRUCTOR	ADAM CHRISTOFIDES PLUMBING		
COMPLETED	03.02.26		
W.A.C. PREPARED	03.02.26		
DESIGNER	RMA INFRASTRUCTURE PTY LTD	SYDNEY WATER CORPORATION	
I CERTIFY THAT THE WORKS HAVE BEEN CONSTRUCTED IN ACCORDANCE WITH THE WORK AS CONSTRUCTED DRAWINGS		FOR DETAILS OF SERVICES SEE SHEET 1	